



# INFINITY<sup>TM</sup>

RESIDENTIAL ELEVATOR

## **Planning Guide (Metric)**

Roped Hydraulic Residential Elevator

### **Applicable Codes:**

ASME A17.1 - 2000 Part 5, Section 5.3  
CAN/CSA B44 - 2000 Part 5, Section 5.3

Part No. 000710  
20-m0-2010

© 2010 Savaria Corporation

# Table of Contents

<b>GENERAL</b>	<b>3</b>
<b>PRODUCT DESCRIPTION</b>	<b>4</b>
<b>INFINITY RESIDENTIAL ELEVATOR SPECIFICATIONS</b>	<b>5</b>
<b>CAB TYPE SELECTION SHEET</b>	<b>6</b>
<b>MACHINE ROOM OPTIONS</b>	<b>7</b>
<b>HOISTWAY AND PIT NOTES</b>	<b>8</b>
<b>CONTROLLER TANK SPECIFICATIONS</b>	<b>9</b>
<b>INFINITY 914 MM X 1219 MM TYPE 1 LEFT HAND – ENTER/EXIT SAME SIDE</b>	<b>10</b>
<b>INFINITY 914 MM X 1372 MM TYPE 1 LEFT HAND –ENTER/EXIT SAME SIDE</b>	<b>11</b>
<b>INFINITY 914 MM X 1524 MM TYPE 1 LEFT HAND – ENTER/EXIT SAME SIDE</b>	<b>12</b>
<b>INFINITY 914 MM X 1219 MM TYPE 2 WALK THROUGH – ENTER/EXIT EITHER SIDE</b>	<b>13</b>
<b>INFINITY 914 MM X 1372 MM TYPE 2 WALK THROUGH – ENTER/EXIT EITHER SIDE</b>	<b>14</b>
<b>INFINITY 914 MM X 1524 MM TYPE 2 WALK THROUGH – ENTER/EXIT EITHER SIDE</b>	<b>15</b>
<b>INFINITY 914 MM X 1219 MM TYPE 3 OR 4 - ENTER/EXIT FRONT OR SIDE</b>	<b>16</b>
<b>INFINITY 914 MM X 1372 MM TYPE 3 OR 4 - ENTER/EXIT FRONT OR SIDE</b>	<b>17</b>
<b>INFINITY 914 MM X 1524 MM TYPE 3 OR 4 - ENTER/EXIT FRONT OR SIDE</b>	<b>18</b>
<b>INFINITY 914 MM X 1219 MM TYPE 5 - ENTER/EXIT SAME SIDE</b>	<b>19</b>
<b>INFINITY 914 MM X 1372 MM TYPE 5 - ENTER/EXIT SAME SIDE</b>	<b>20</b>
<b>INFINITY 914 MM X 1524 MM TYPE 5 - ENTER/EXIT SAME SIDE</b>	<b>21</b>
<b>LOADS ON BUILDING</b>	<b>22</b>
<b>MASONRY CONSTRUCTION - SECTIONAL VIEW</b>	<b>23</b>
<b>MASONRY CONSTRUCTION - PLAN VIEW</b>	<b>24</b>
<b>WOOD CONSTRUCTION - SECTIONAL VIEW</b>	<b>25</b>
<b>WOOD CONSTRUCTION - PLAN VIEW</b>	<b>26</b>
<b>PIT DETAILS</b>	<b>27</b>
<b>OVERHEAD CLEARANCE DETAILS</b>	<b>28</b>
<b>SUGGESTED WALL CONFIGURATION FOR WOOD CONSTRUCTION</b>	<b>29</b>
<b>SUGGESTED WALL CONFIGURATION FOR WOOD CONSTRUCTION</b>	<b>30</b>
<b>RAIL SUPPORT WALL SPECIFICATIONS</b>	<b>31</b>
<b>INFINITY STANDARD NOTES</b>	<b>32</b>
<b>SPECIFICATIONS FOR PART 5.3 COMPLIANCE</b>	<b>33</b>

## **Change Notice**

**July 31, 2008 - added rail load definitions**

**December 21, 2009 - updated Type 5 drawings**

**April 20, 2010 - updated to new company logo, name and typeface**

## General

This Planning Guide is designed to assist architects, contractors and lift professionals in planning for an Infinity Residential Elevator to meet the requirements of ASME A17.1 - 2000 Part 5, Section 5.3 and CAN/CSA B44 - 2000 Part 5, Section 5.3.

We strongly recommend that you contact the code authority having jurisdiction in the area(s) where the lift will be installed to become familiar with all the legal requirements governing the installation and use of lifts in commercial applications. It is extremely important for you to know and adhere to all regulations pertaining to the installation and use of lifts.

### IMPORTANT NOTICE

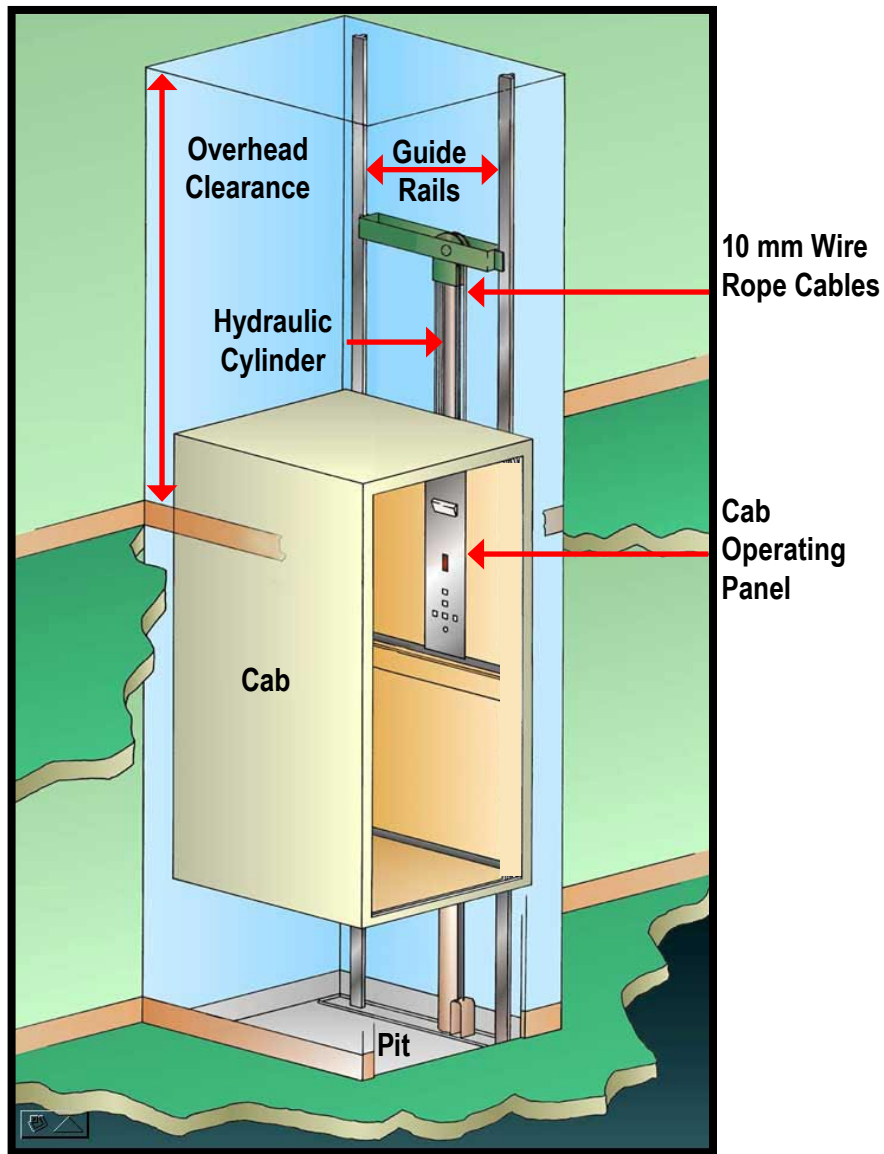
This Planning Guide provides nominal dimensions and specifications useful for the initial planning of a lift project. Before beginning actual construction, be sure to receive application drawings customized with specifications and dimensions for your specific project.

Lift configurations and dimensions are in accordance with our interpretation of the standards set forth by ASME A17.1 - 2000 Part 5, Section 5.3 and CAN/CSA B44 - 2000 Part 5, Section 5.3. Please consult Savaria or the authorized Savaria dealer in your area for more specific information pertaining to your project, including any discrepancy between referenced standards and those of any local codes or laws.

The dimensions and specifications in this Planning Guide are subject to change (without notice) due to product enhancements and continually evolving codes and product applications.

- Determine customer's intention for use.
- Determine code requirements of site.
- Determine installation parameters of site.
- Use page 6 to determine the car type and hoistway size requirements.
- Use pages 7 and 32 to plan for machine room and electrical requirements.

## Product Description



**Infinity in Hoistway**

### **Meets Americans with Disabilities (ADA) Act Requirements**

The Infinity meet the requirements of the ADA Accessibility Guidelines as a means to provide public building access.

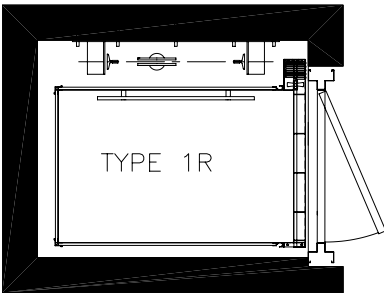
### **Design Assistance**

With over 30 years of experience. Savaria has the expertise to provide solutions to practically every design challenge you face. Please call our Customer Service Department for professional advice at (800) 661-5112 or (905) 791-5555.

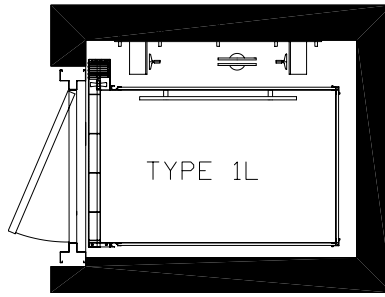
# Infinity Residential Elevator Specifications

Load Capacity	340 kg or 454 kg
Rated Speed	0.18 mps
Power Supply (circuit to be supplied by others)	North American: 208 Volt, Three Phase, 60 Hz, 30 Amps or 230 Volt, Single Phase, 60 Hz, 30 Amps / International: 220 Volt, Single Phase 50 Hz, 30 Amps
Lighting Supply (circuit to be supplied by others)	North American: 115 Volt, 60 Hz, 15 Amps / International: 220 Volt 50 Hz, 15 Amps
Drive System	1:2 Cable Hydraulic with Slack Cable Safety Device 3 hp Submersed Motor Two 10 mm Diameter Steel Aircraft Cables Rope wedge sockets
Cab Size	W914 mm x L1219 mm x H2032 mm, Type 1, 2, 3, 4, 5 W914 mm x L1372 mm x H2032 mm, Type 1, 2, 3, 4, 5 W914 mm x L1524 mm x H2032 mm, Type 1, 2, 3, 4, 5
Cab Panel Finish	Solid Melamine or MDF Panels (standard), Unfinished Oak Veneer Panels (optional), Finished Recessed Veneer Panels (optional), Solid Hardwood Raised Panels (optional)
Maximum Travel	15.24 m
Control System	Automatic User Interface Solid State Electronics with Relay Logic Motor Controls
Levels and Openings	5 Stops and 2 Openings
Pit Depth Required	203 mm minimum up to 2438 mm
Minimum Overhead Clearance	2337 mm for standard 2032 mm high cab, 2743 mm for 2438 mm high cab
Hall Station and Control Panel Finish	Clear or Bronze Anodized Aluminum (standard) or Stainless Steel (optional) or Brass (optional) Rectangular (standard) or Oval (optional) Hall Stations, Keyless (standard) or Keyed (optional)
Standard Features	<ul style="list-style-type: none"> <li>Anti-Creep Device</li> <li>Automatic Cab ON/OFF Lighting</li> <li>Cab Gate Safety Switch</li> <li>Car Top Stop Switch</li> <li>Clear or Bronze Anodized Aluminum Cab Entrance Trim and Handrail</li> <li>Data Plates, Capacity Tags and Rope Tags</li> <li>Emergency Stop and Alarm Buttons</li> <li>Emergency Battery Back-up for Lighting, Alarm and Emergency Lowering</li> <li>Upper and Lower Terminal Limits</li> <li>Limited Warranty (covers the repair or replacement of any defective parts for a period of 36 months from date of shipment)</li> <li>Magnetic Floor Selection, Stopping and Re-leveling</li> <li>Manual Reset Slack Rope Safety Switch</li> <li>Mechanical Rail Shoring Blocks</li> <li>Negative Pressure Switch</li> <li>Pit Switch</li> <li>Presentation Drawings</li> <li>Pump Run Timer</li> <li>Rail Sections (2438 mm standard or 4877 mm optional)</li> <li>Two 12 V, 4 AH, Sealed No Maintenance Batteries with 24 V, 4 amp Smart Charge™ Battery Charge</li> <li>Unfinished Plywood Sub-Floor</li> <li>Variable Speed Pressure Compensated Valve with Manual Lowering</li> <li>White Ceiling with Recessed Incandescent Down Lights</li> </ul>
Options	<ul style="list-style-type: none"> <li>2438 mm High Cab</li> <li>Automatic Gate Operator (accordion gates only)</li> <li>Automatic Swing Door Operator</li> <li>Buffer Springs (330 mm Pit Depth Minimum)</li> <li>Emergency Hands-Free Telephone</li> <li>Finished Oak Hardwood Flooring</li> <li>Hose with Flow Control Valve (4572 mm, 6096 mm or 7620 mm)</li> <li>In Car Digital Floor Indicator</li> <li>Interlocks for Doors by Others (Kwiklock or GAL)</li> <li>Keyed ON/OFF Control Panel and Hall Stations</li> <li>Lamp Style Hall Position Indicators</li> <li>Light Screens</li> <li>Pipe Rupture Valve</li> <li>Split Cylinder for Travel over 9754 mm</li> </ul>

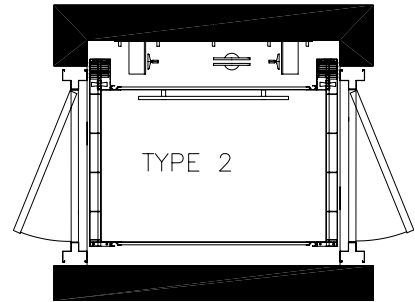
# Cab Type Selection Sheet



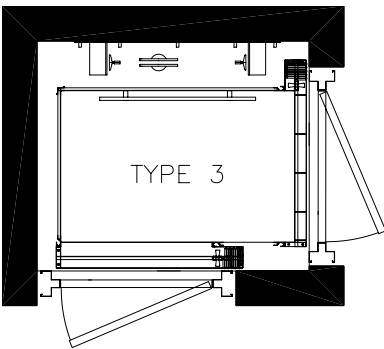
TYPE 1R



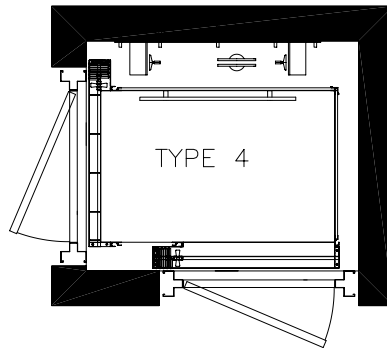
TYPE 1L



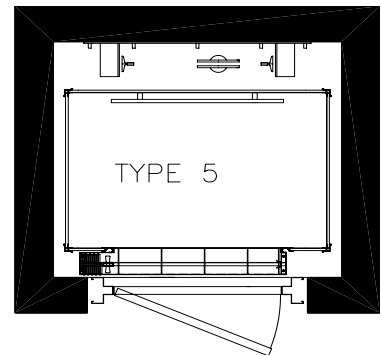
TYPE 2



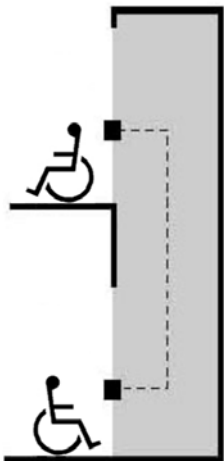
TYPE 3



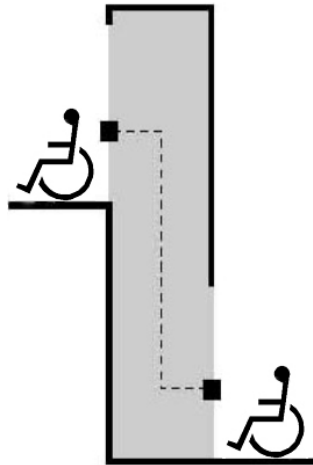
TYPE 4



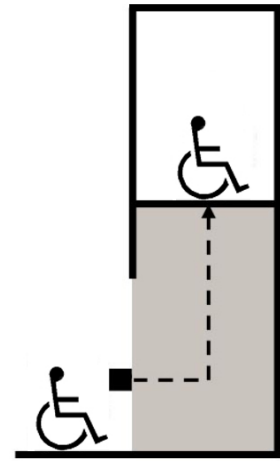
TYPE 5



Type 1 and 5



Type 2

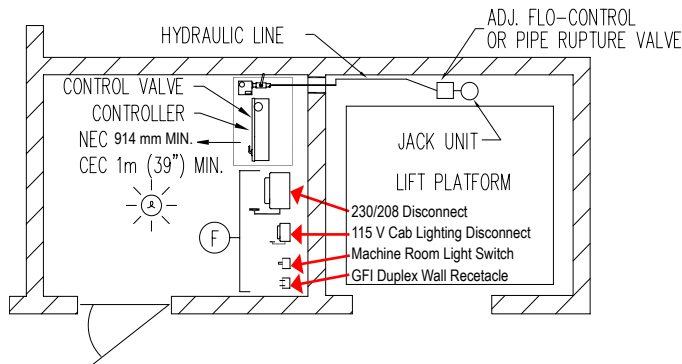


Type 3 and 4

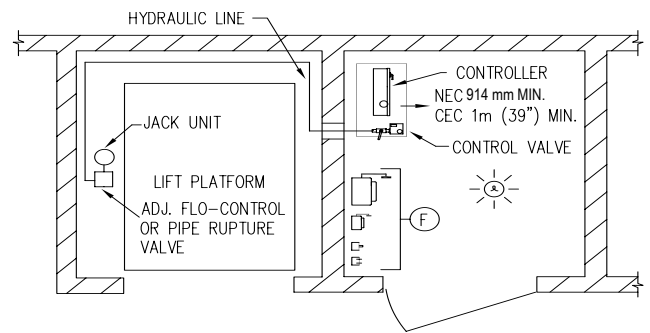
## IMPORTANT

Finished hoistway dimensions must include the drywall. Determine the fire rating of the hoistway, the type and layers of sheet rock and build only off the final shop drawings specific to your project.

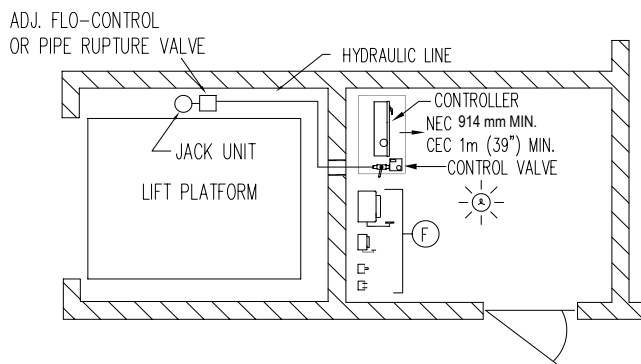
# Machine Room Options



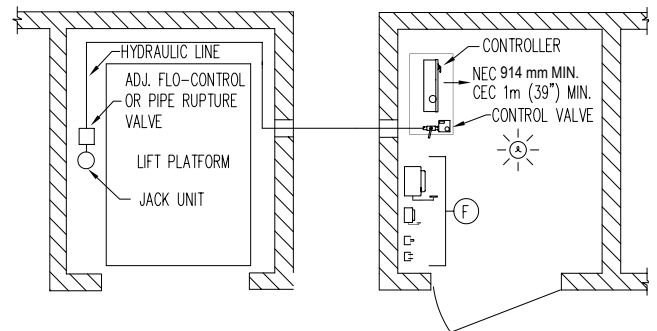
**Left Hand Position**



**Right Hand Position**



**Back Position**



**Remote Position**

- The machine room must be built in accordance with local, state/provincial and national codes. Adequate ventilation is required to maintain a temperature of 10°C to 38°C for output of 3600 BTU per hour.
- Power supply must be 208V, three-phase with 30 amp OR 230V, single-phase with 30 amp dedicated circuit with equipment ground. A lockable fused disconnect with an auxiliary normally-open interlock switch must be located next to the controller. The electrical circuit must terminate on the line side terminal lugs of the disconnect. It is provided and installed by others.
- The machine room lighting shall be a minimum of 204 lumens per sq./m at working surfaces.
- The switch for the light must be within 457 mm of the strike side of the machine room door.
- The switch, light and wiring are provided and installed by others. The light must be guarded to prevent accidental breakage of contact with the hot bulb. The switch, light, wiring and guard are provided and installed by others.
- A convenience outlet for the cab lights of 115V, single-phase 15 amp single phase with G.F.I. shall be located next to the light switch in the machine room, provided and installed by others. NEC requires a 762 mm wide x 914 mm deep work space in front of the disconnects and the lift controller.
- The machine room must be free of any pipes, wiring and obstructions not related to the operation of the lift. Provide a 102 mm conduit from the lift shaft to the remote machine room.

## Hoistway and Pit Notes

- A load bearing wall is required to sustain rail reactions. See page 22 for rail reactions.
- Suggested hoistway pit floor construction consists of an 203 mm concrete slab poured on a natural or compacted soil with a minimum allowable bearing pressure of 1.0 KSF.
- The minimum compressive strength of the concrete at 28 days must be no less than 3000 PSI. #5 reinforcing steel (grade 60) must be placed at the bottom of the slab in 2 traverse directions and at a spacing of 305 mm.
- Hoistway pit floor to support a load of 19.6KN (includes impact).
- **2337 mm overhead clearance** required above the top landing floor for 2032 mm cab height.
- **2743 mm overhead clearance** required above the top landing floor for 2286 mm cab height.
- 203 mm minimum pit.
- Hoistway sizes reflect running and access clearances only. Consult your local AHJ to assure compliance with local codes.
- Hoistway is required to be free of all pipes, wiring and obstructions not related to the operation of the elevator.

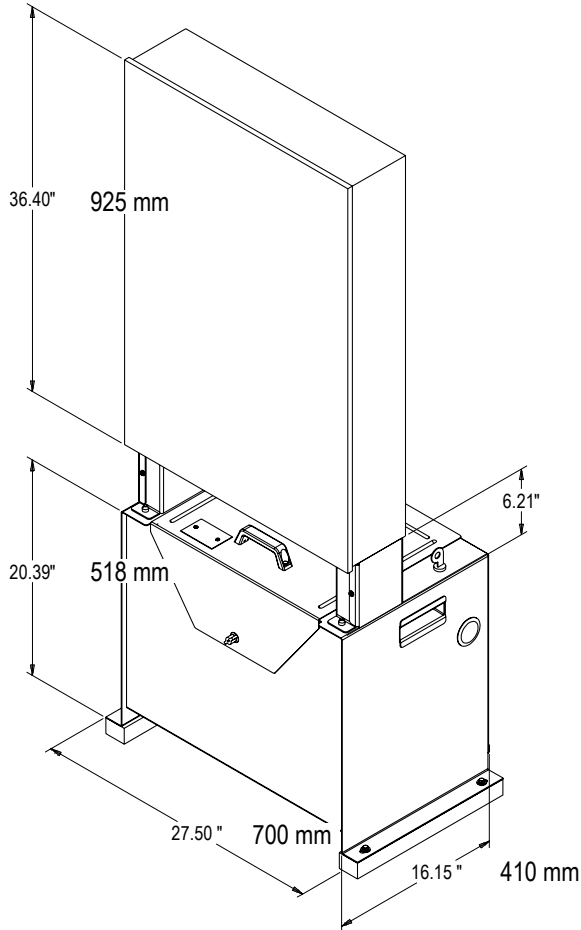


## Controller Tank Specifications

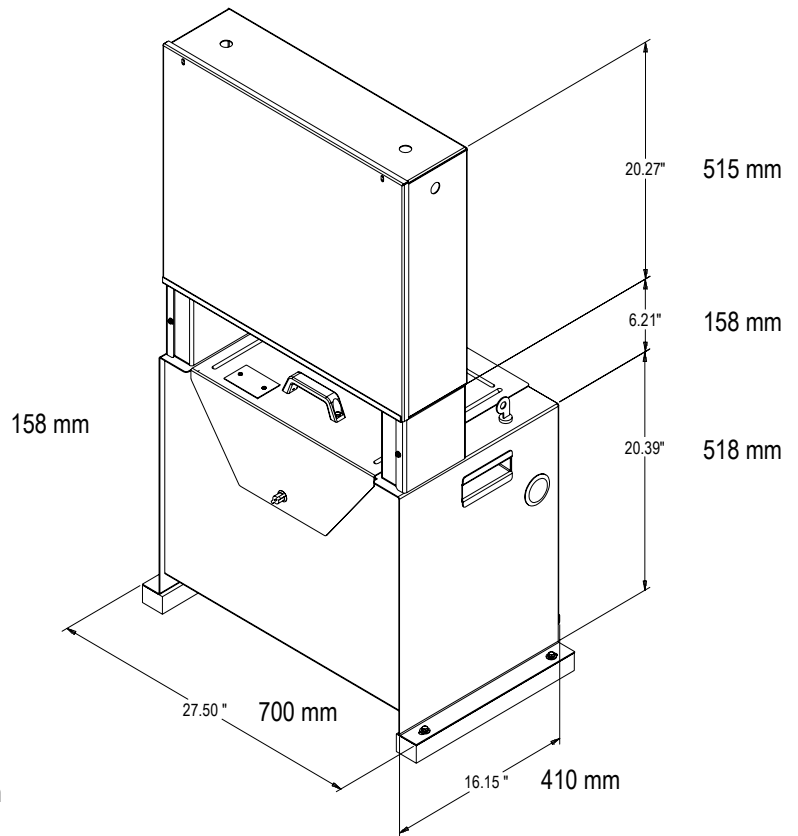
<b>Dimensions (mm)</b>	H 1194 mm x W 711 mm x D 432 mm (Relay Brd) H 1448 mm x W 711 mm x D 432 mm (PLC - 5 stop option only)
<b>Minimum Required Clearance in Front (mm)</b>	991 mm
<b>Valve and Manual Lowering Handle Location</b>	Inside tank
<b>Rupture Valve Test</b>	T-fitting factory installed
<b>Tank to Controller Wiring</b>	Quick connect valve and motor wiring
<b>Controller Layout</b>	PLC or Relay Board
<b>Keyed Lock to Tank</b>	Yes
<b>Machine Room Required</b>	NO (with local jurisdiction approval)
<b>Tank Capacity (ltr)</b>	57-63 ltr
<b>Max. Dry Weight (kgs)</b>	55 kg
<b>Max. Filled Weight (kgs)</b>	117 kg
<b>Operating Environment</b>	10°C - 49°C
<b>Operating Volume</b>	57 dBA

## Controller Tank Features

- Hydraulic Hose Connection Ports on either side of the tank
- Built in handles on either side of the tank
- Isolation mounting of pump motor valve assembly minimizes operating noise



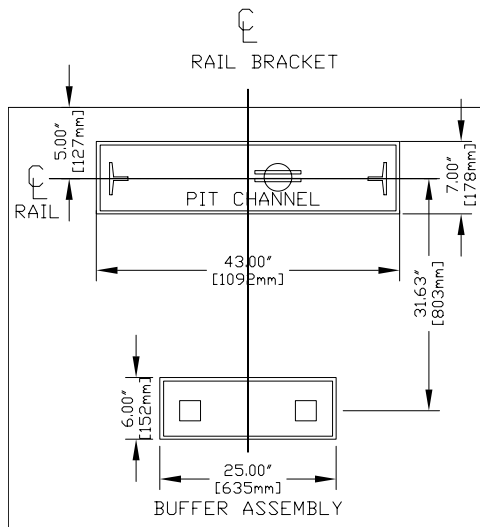
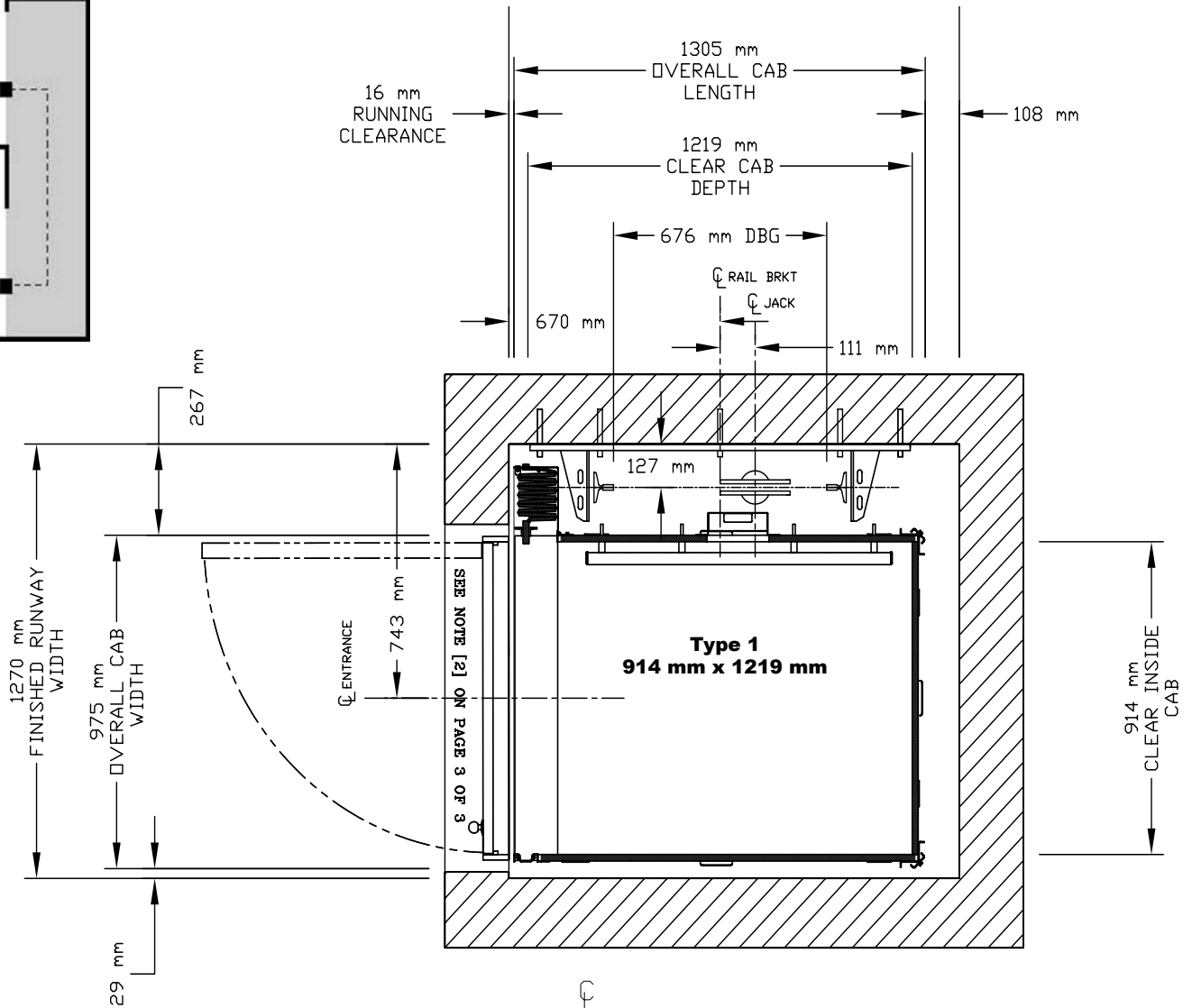
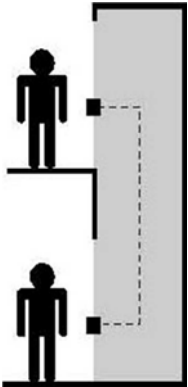
**PLC Controller Tank**



**Relay Board Controller Tank**

# INFINITY 914 mm X 1219 mm TYPE 1 LEFT HAND - ENTER/EXIT SAME SIDE

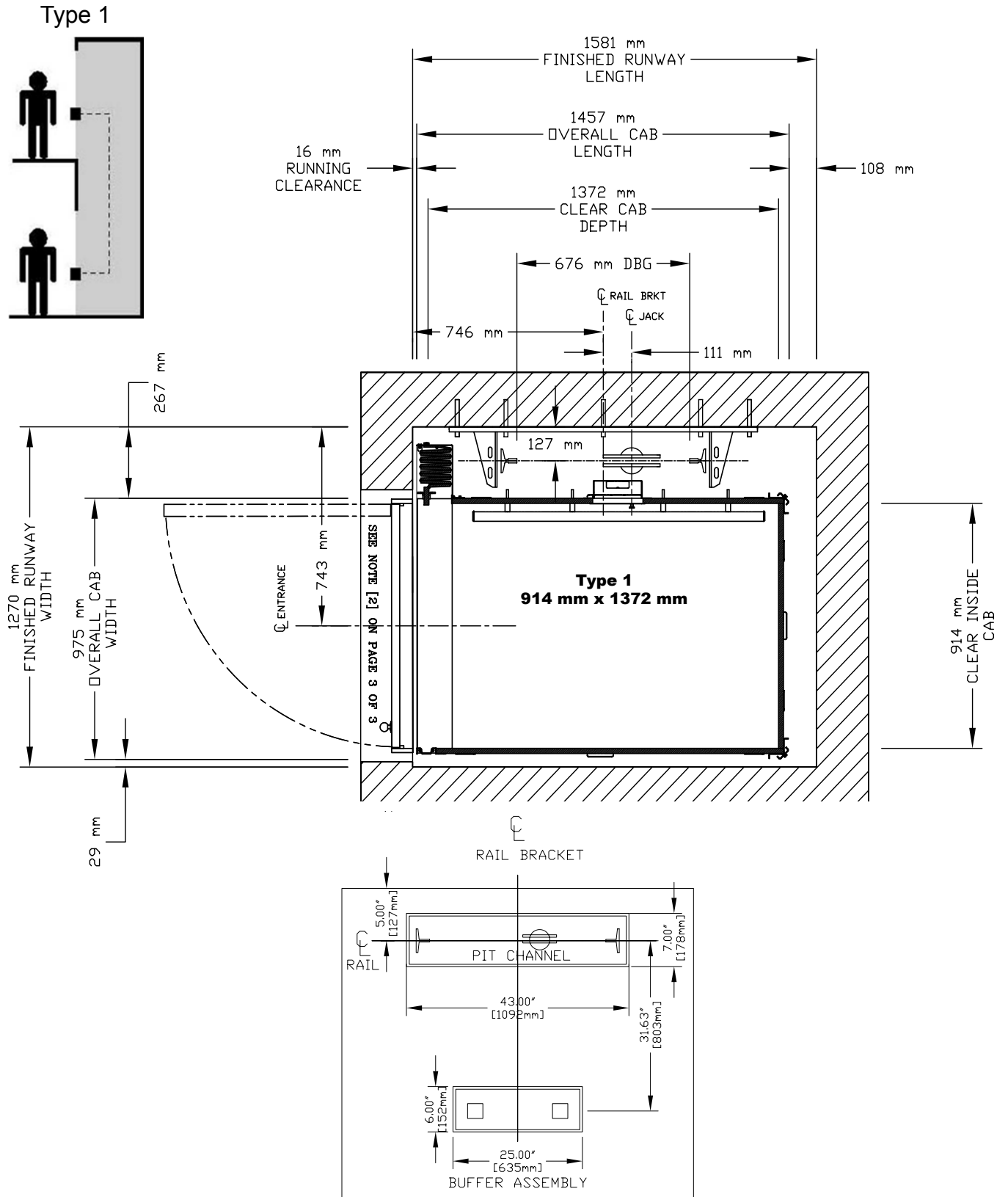
Type 1



### NOTE

**Plan view drawing can be reversed for right-hand applications.**

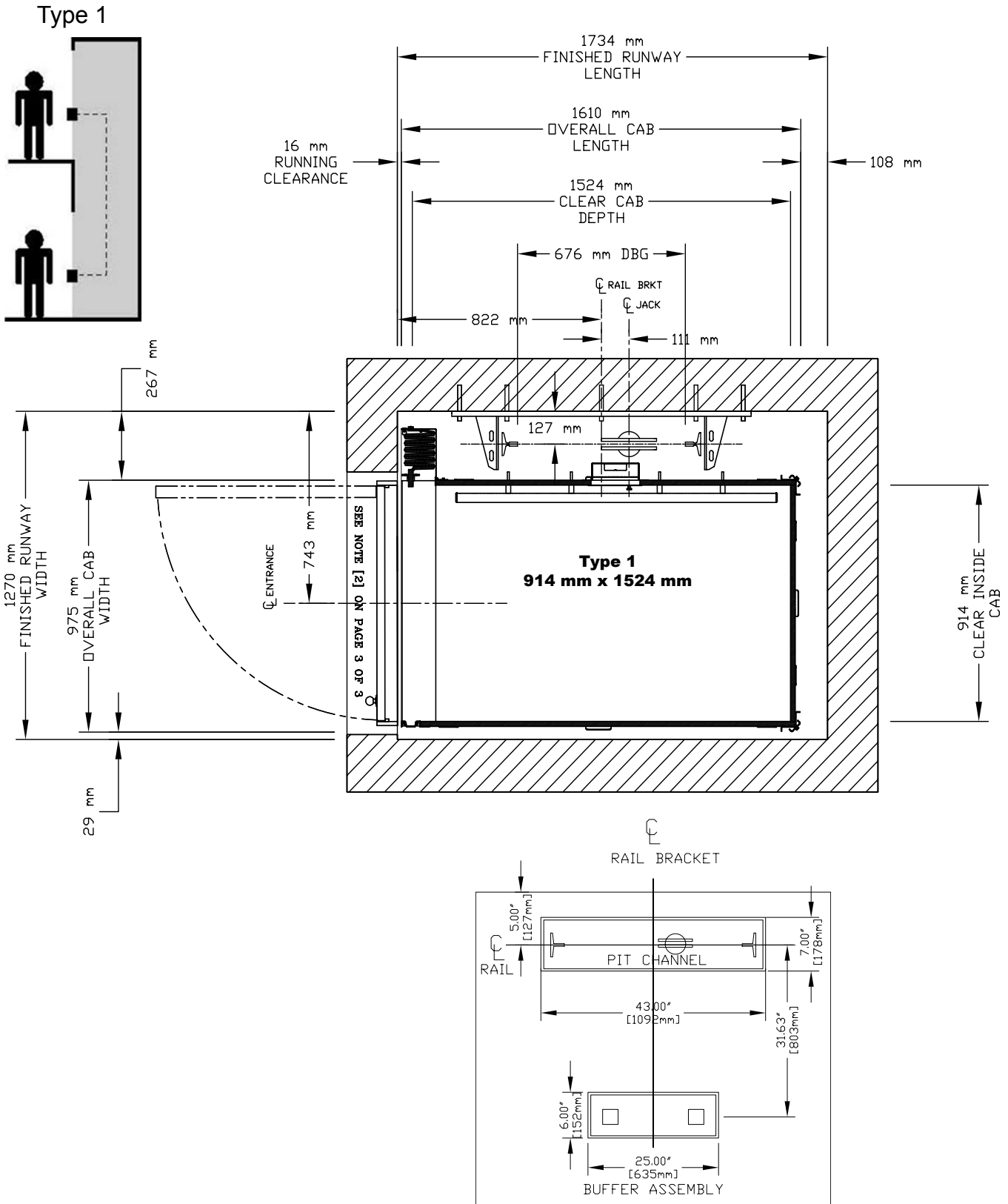
# INFINITY 914 mm X 1372 mm TYPE 1 LEFT HAND - ENTER/EXIT SAME SIDE



### NOTE

**Plan view drawing can be reversed for right-hand applications.**

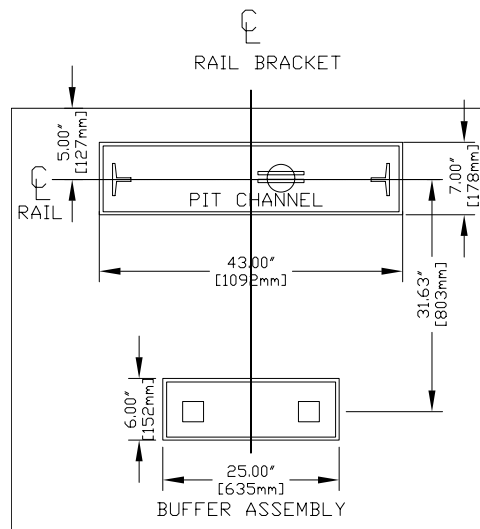
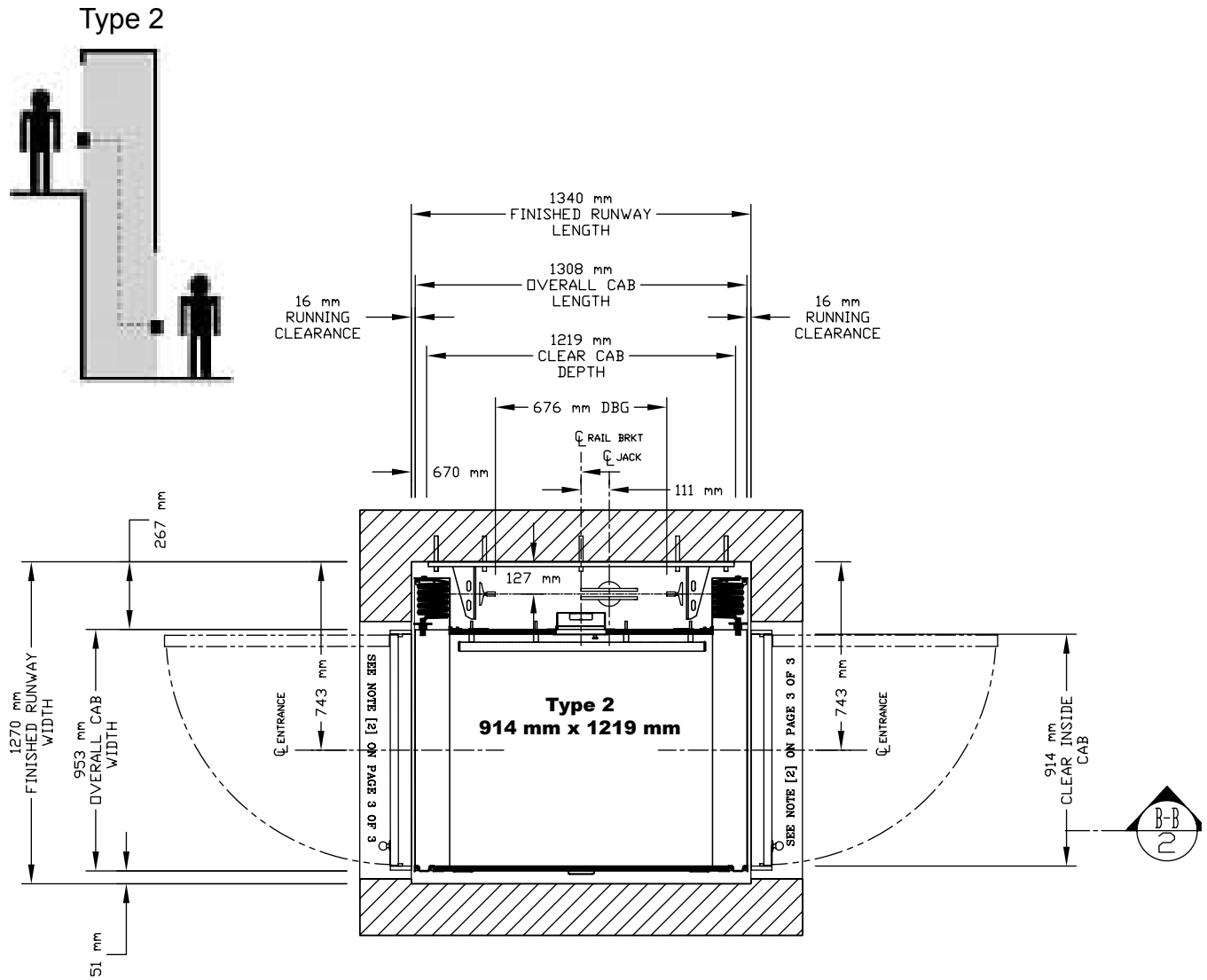
# INFINITY 914 mm X 1524 mm TYPE 1 LEFT HAND - ENTER/EXIT SAME SIDE



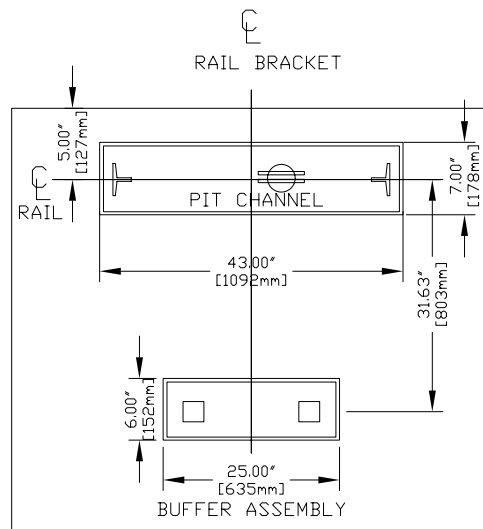
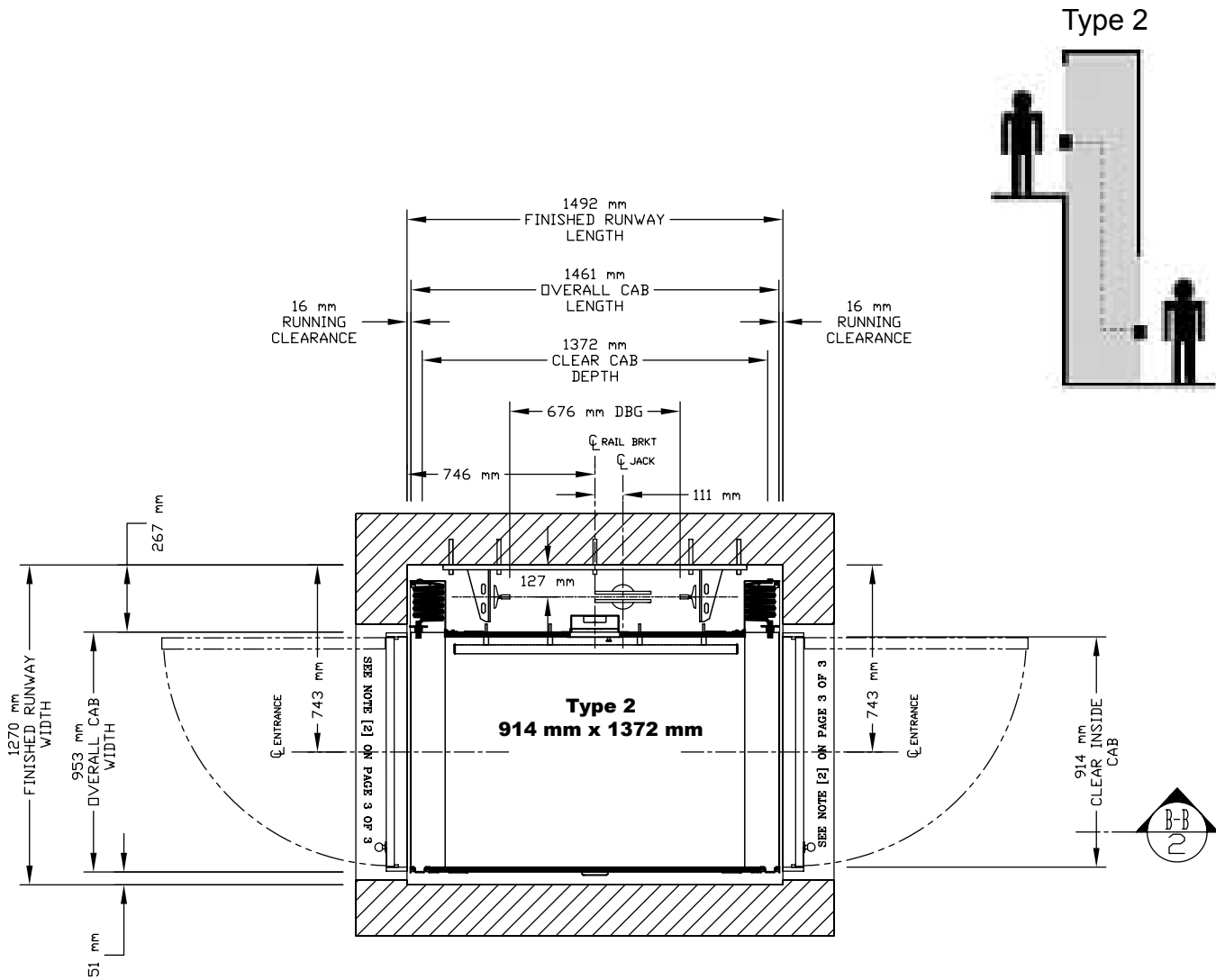
## NOTE

**Plan view drawing can be reversed for right-hand applications.**

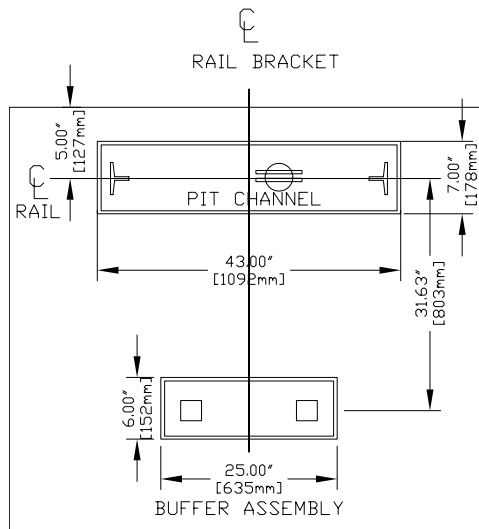
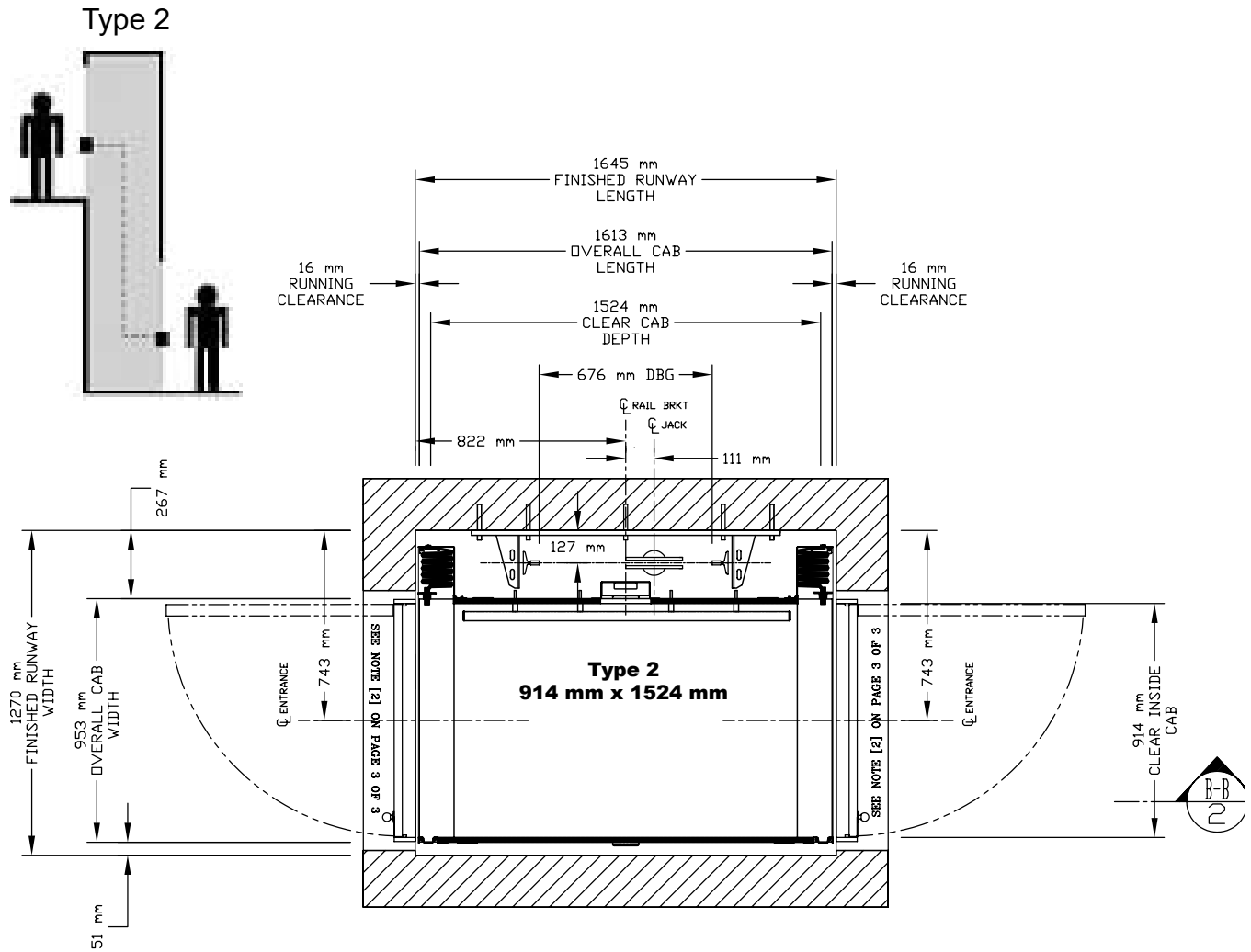
# INFINITY 914 mm X 1219 mm TYPE 2 WALK THROUGH – ENTER/EXIT EITHER SIDE



# INFINITY 914 mm X 1372 mm TYPE 2 WALK THROUGH – ENTER/EXIT EITHER SIDE



# INFINITY 914 mm X 1524 mm TYPE 2 WALK THROUGH – ENTER/EXIT EITHER SIDE



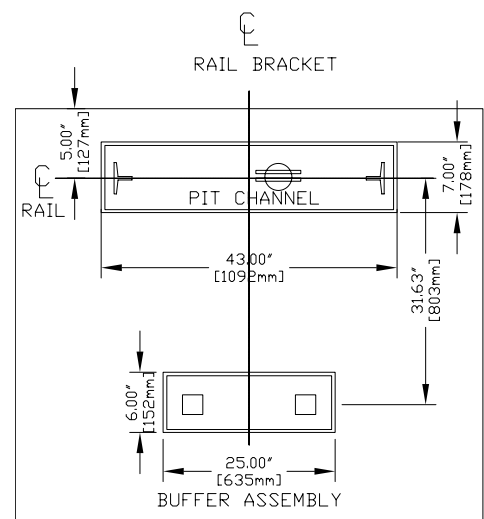
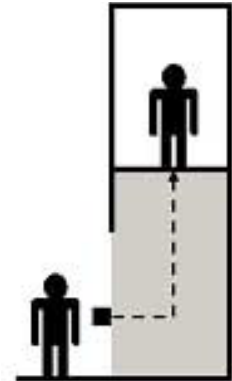
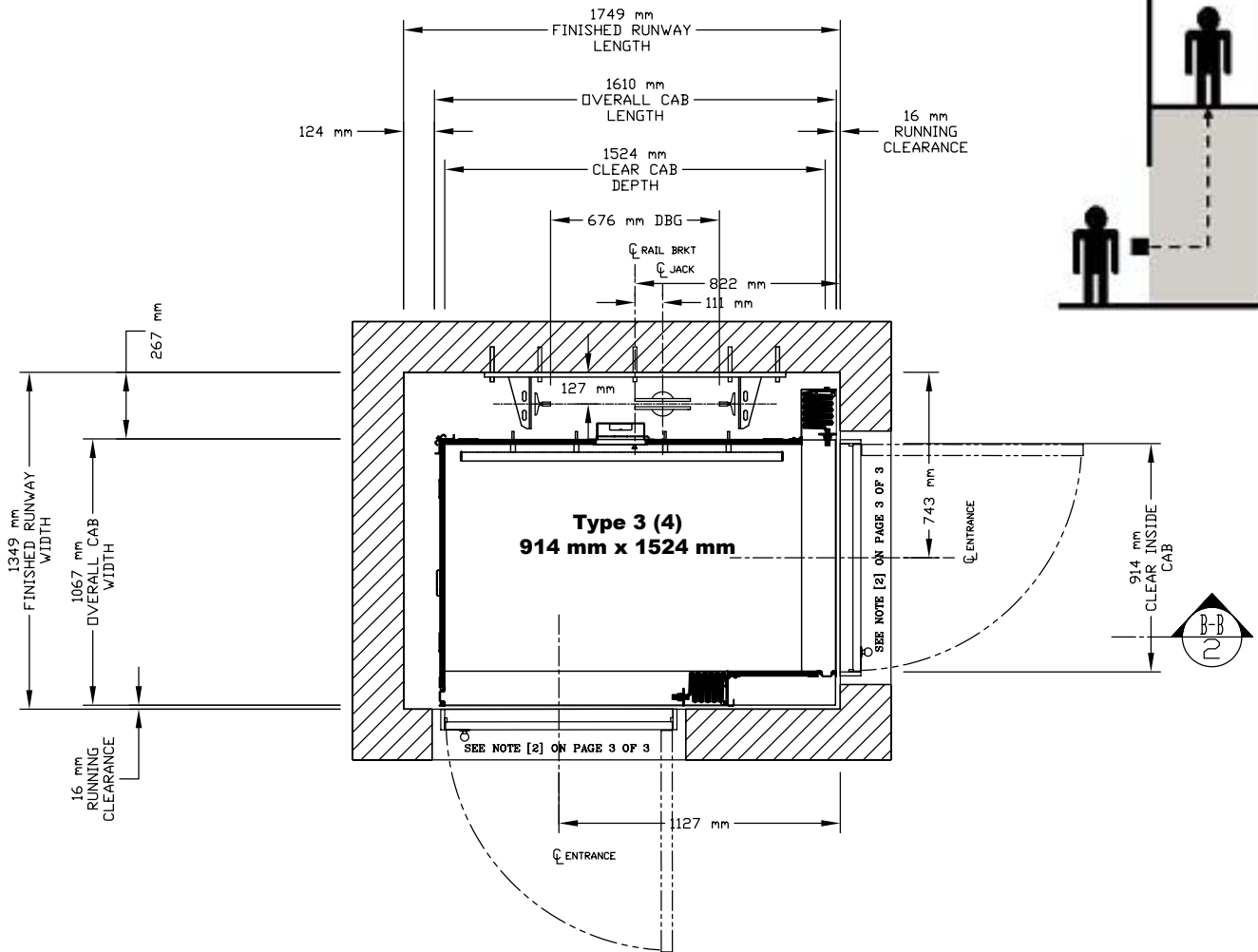






# INFINITY 914 mm X 1524 mm TYPE 3 OR 4 - ENTER/EXIT FRONT OR SIDE

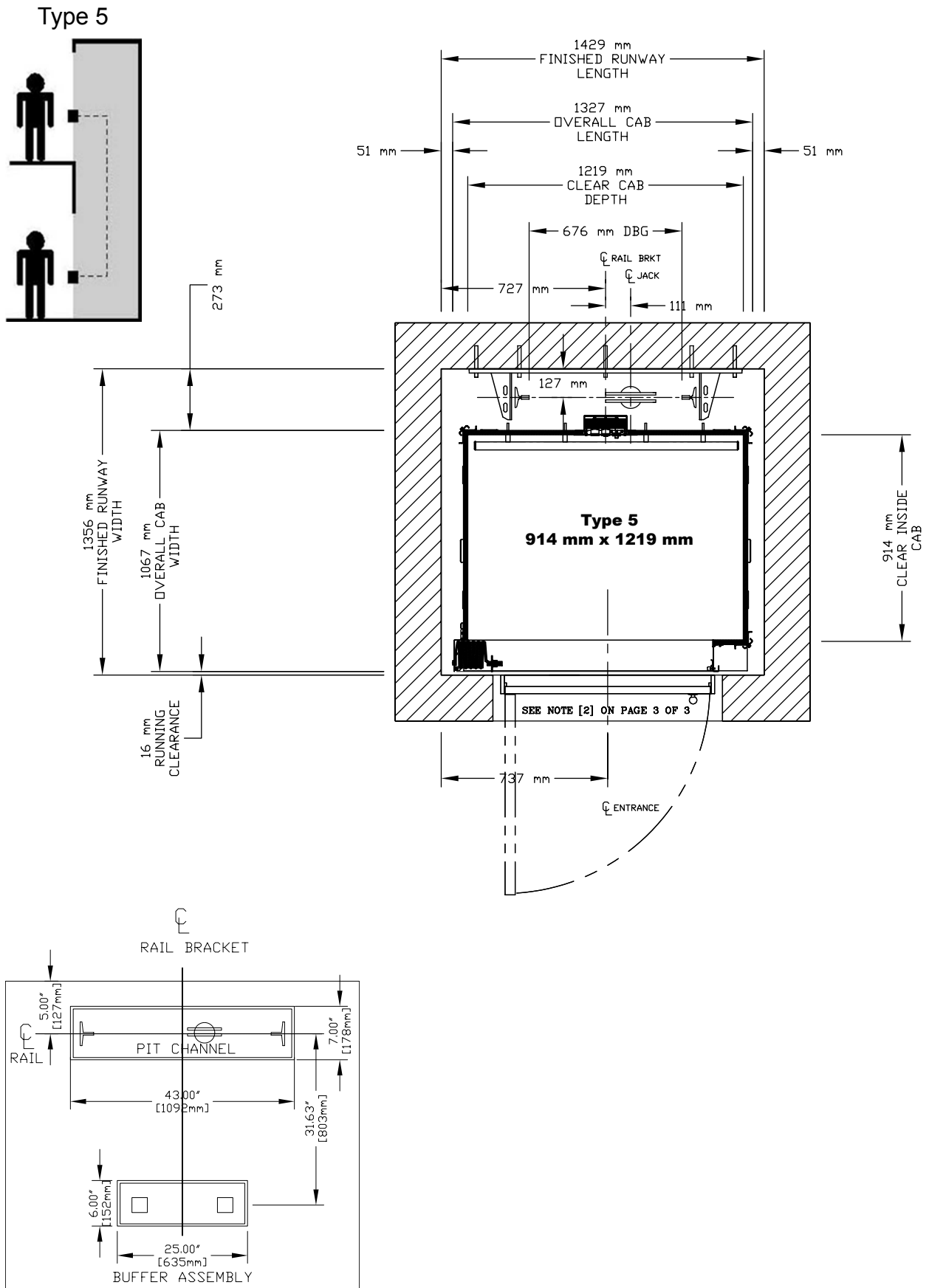
Type 3 or 4



## NOTE

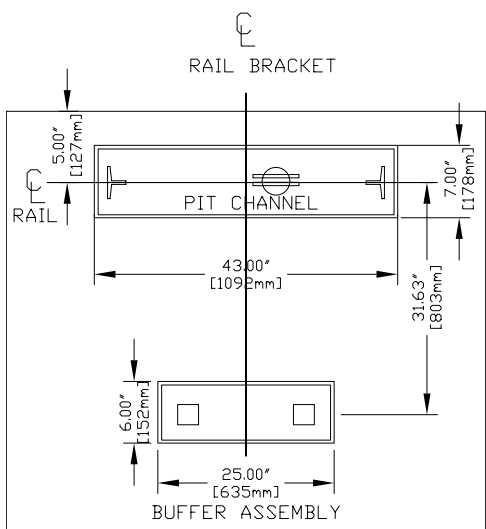
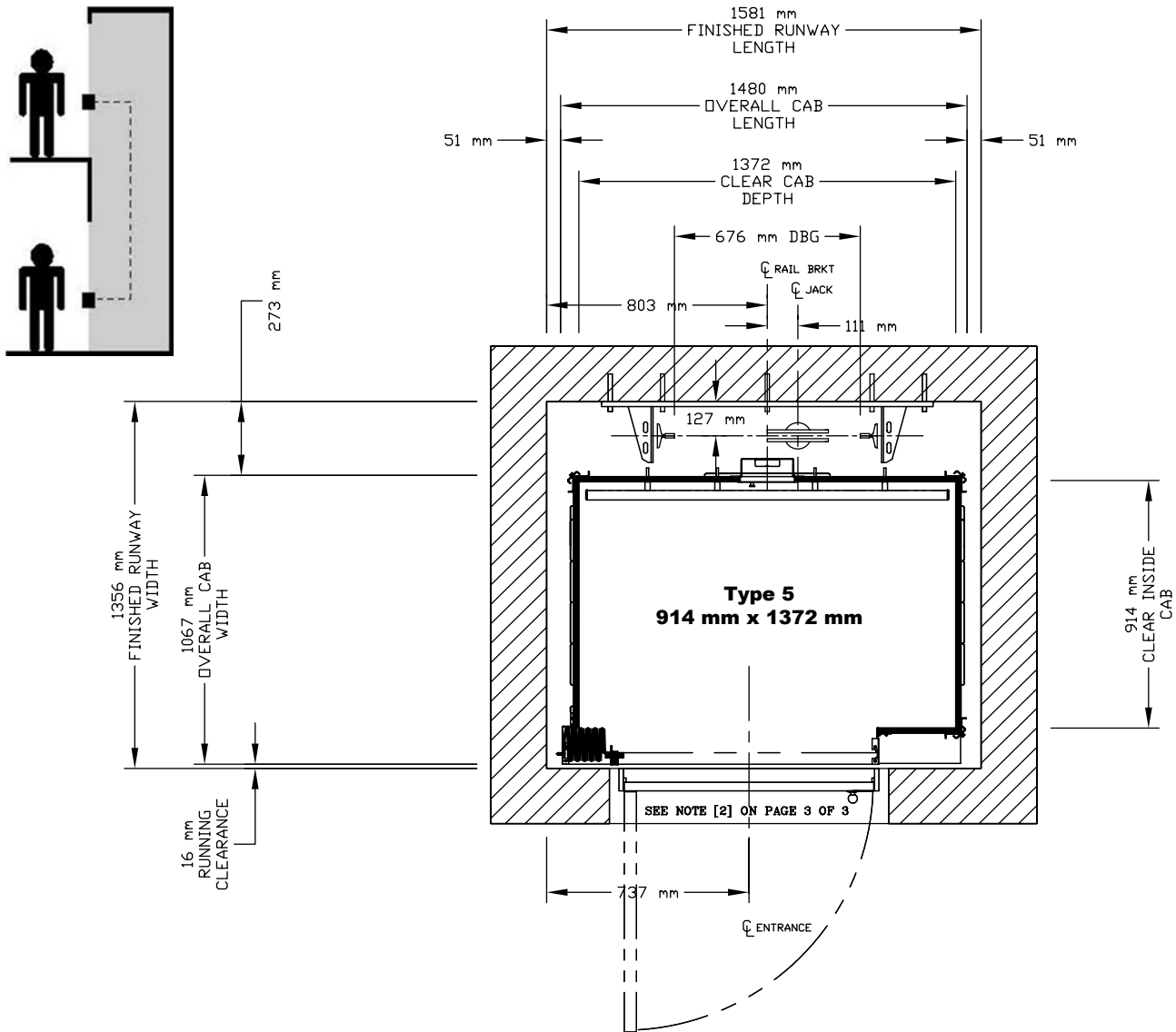
Plan view drawing can be reversed for Type 4 applications.

# INFINITY 914 mm X 1219 mm TYPE 5 - ENTER/EXIT SAME SIDE

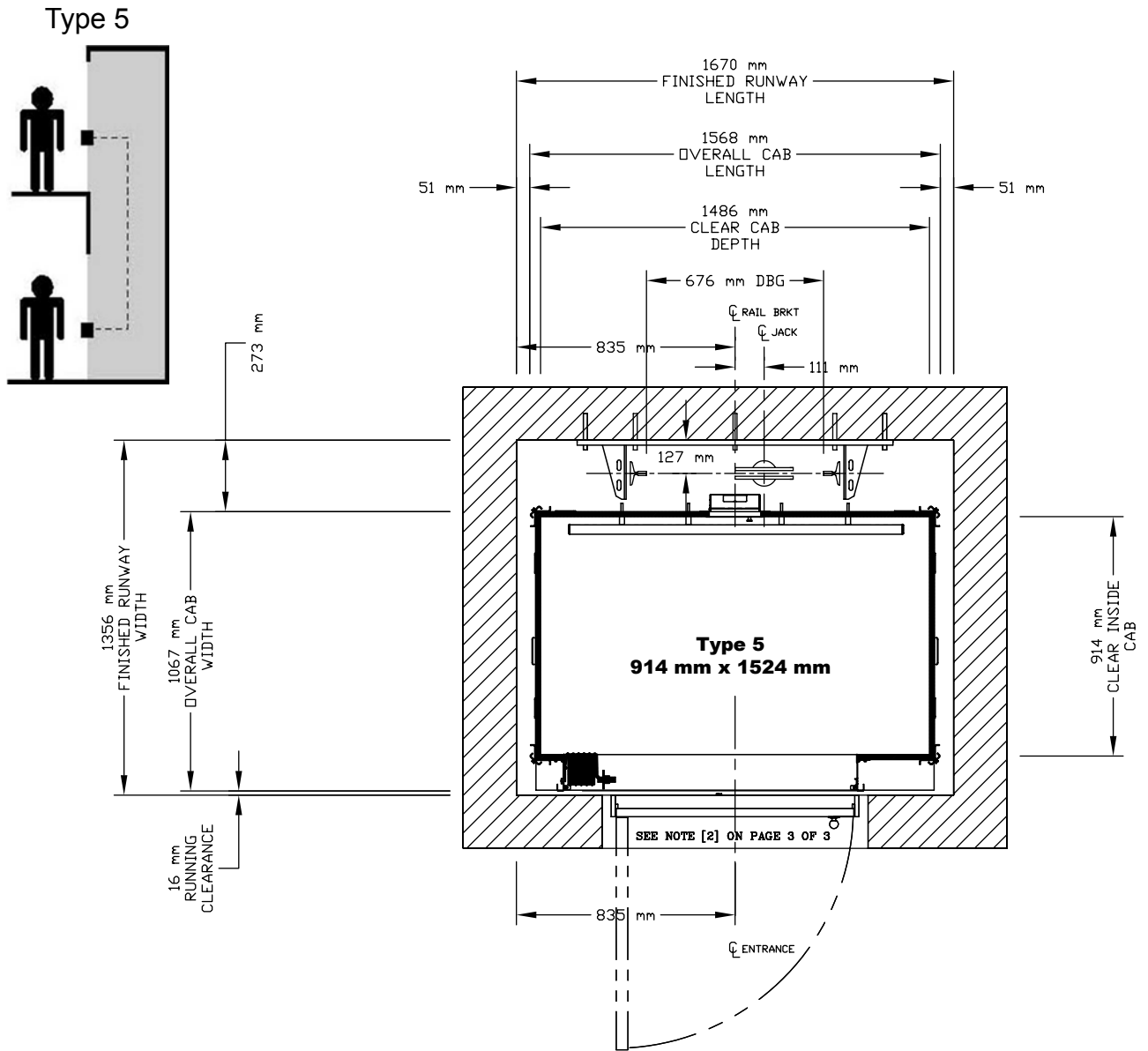


# INFINITY 914 mm X 1372 mm TYPE 5 - ENTER/EXIT SAME SIDE

Type 5



# INFINITY 914 mm X 1524 mm TYPE 5 - ENTER/EXIT SAME SIDE

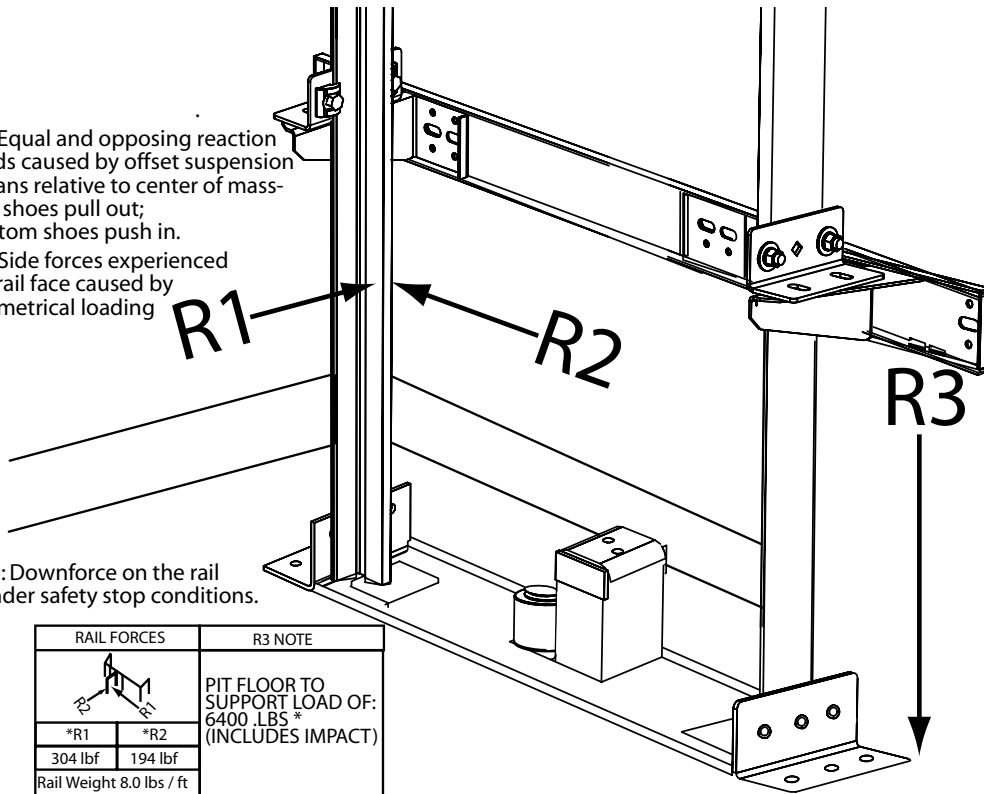


# Loads on Building

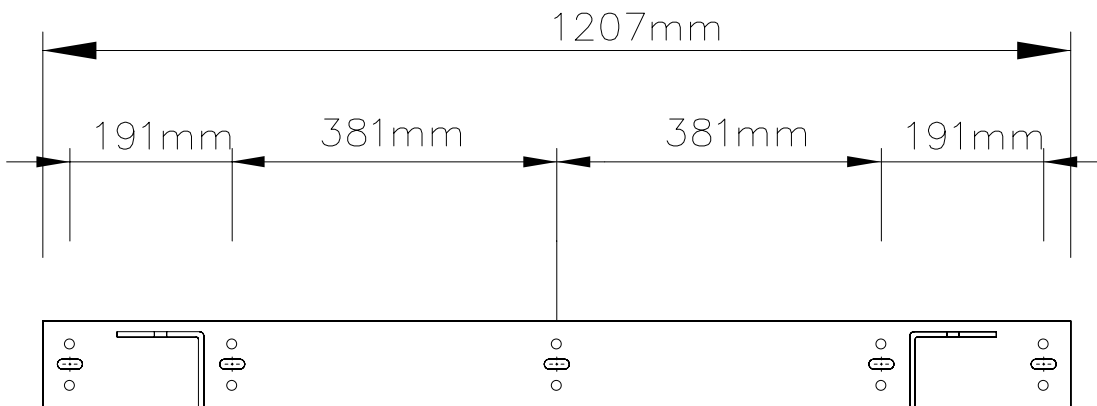
R1: Equal and opposing reaction loads caused by offset suspension means relative to center of mass- top shoes pull out; bottom shoes push in.

R2: Side forces experienced on rail face caused by asymmetrical loading

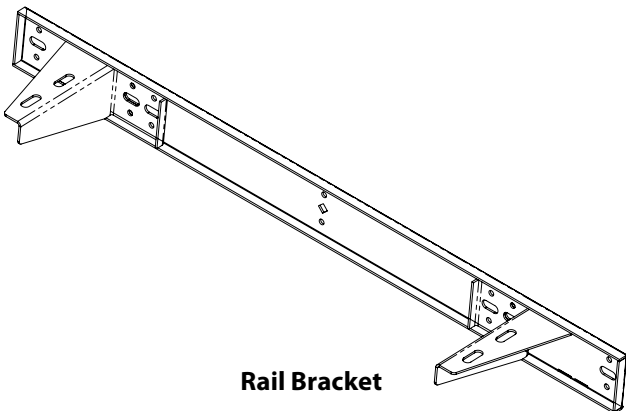
R3: Downforce on the rail under safety stop conditions.



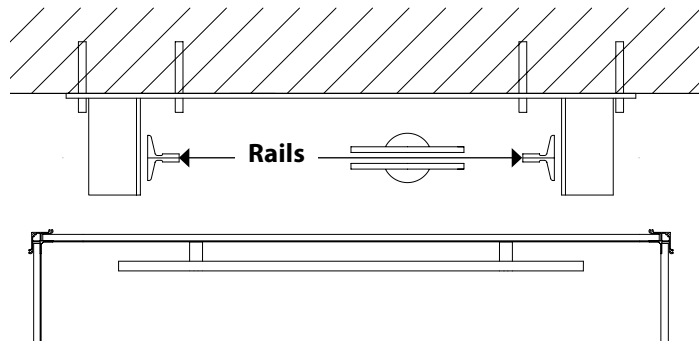
RAIL FORCES		R3 NOTE
		PIT FLOOR TO SUPPORT LOAD OF: 6400 LBS* (INCLUDES IMPACT)
*R1	*R2	
304 lbf	194 lbf	
Rail Weight 8.0 lbs / ft		



**Rail Bracket Dimensions**

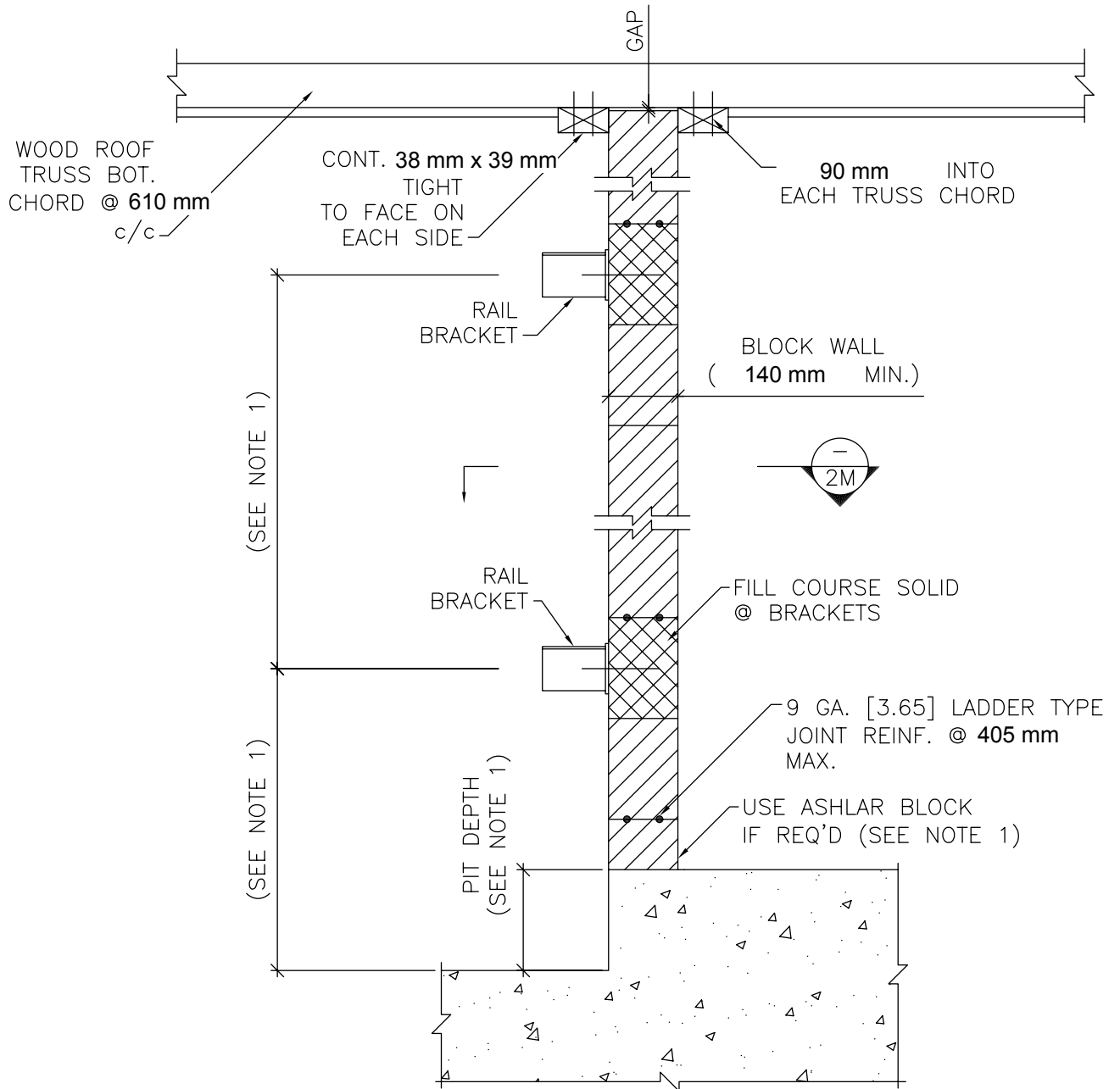


**Rail Bracket**

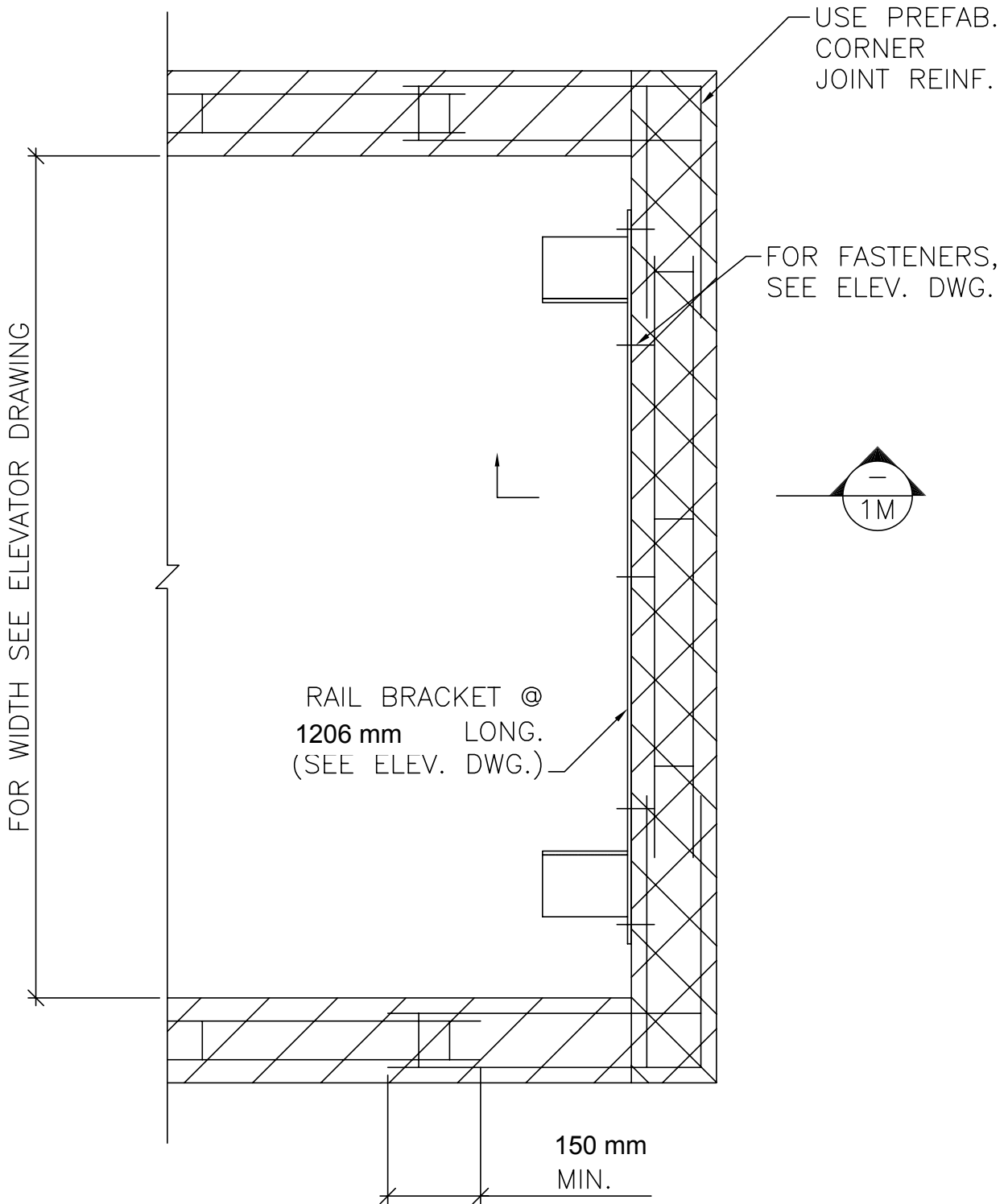


**Support Wall Rail Orientation**

# Masonry Construction - Sectional View

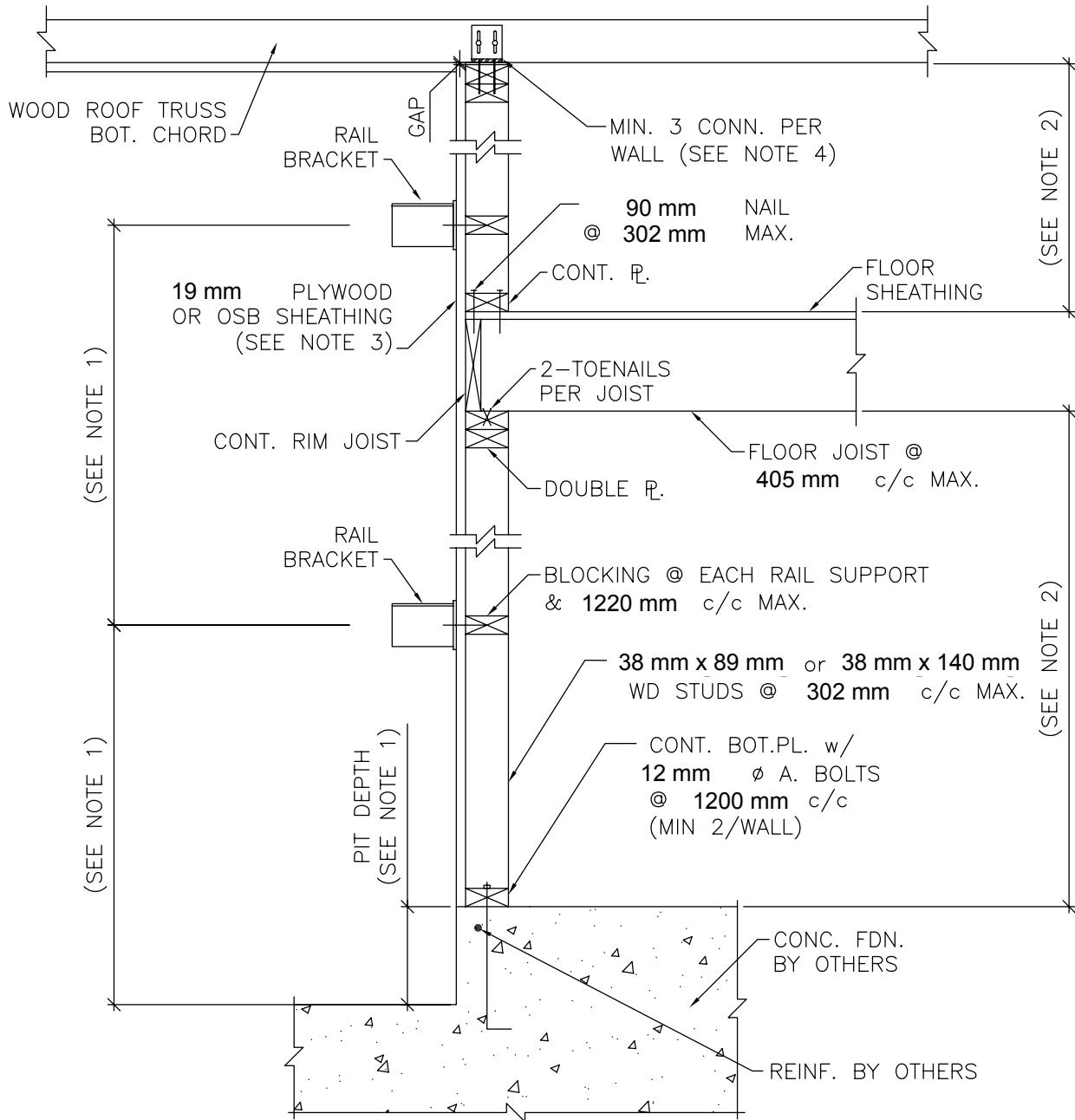


# Masonry Construction - Plan View

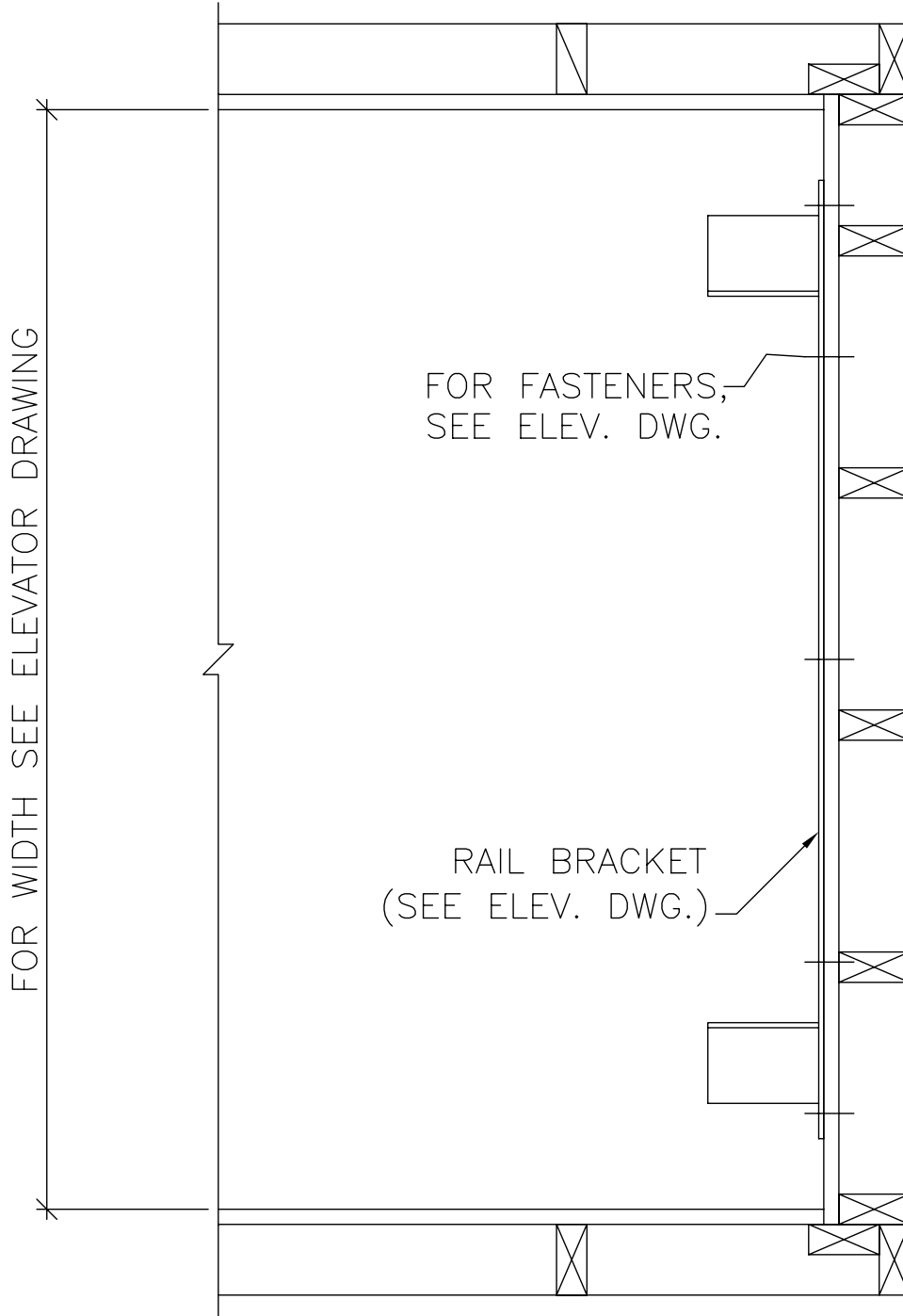




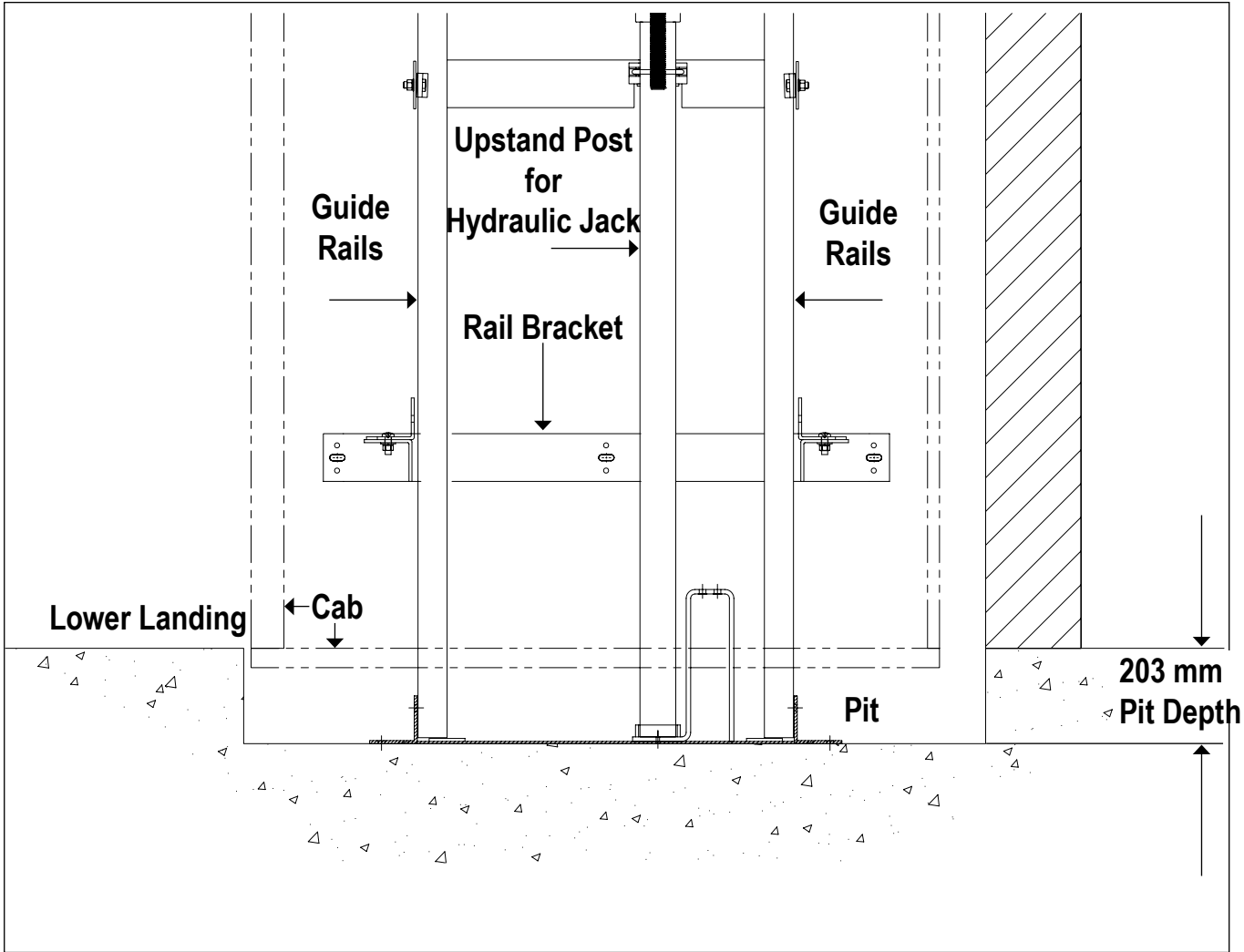
# Wood Construction - Sectional View



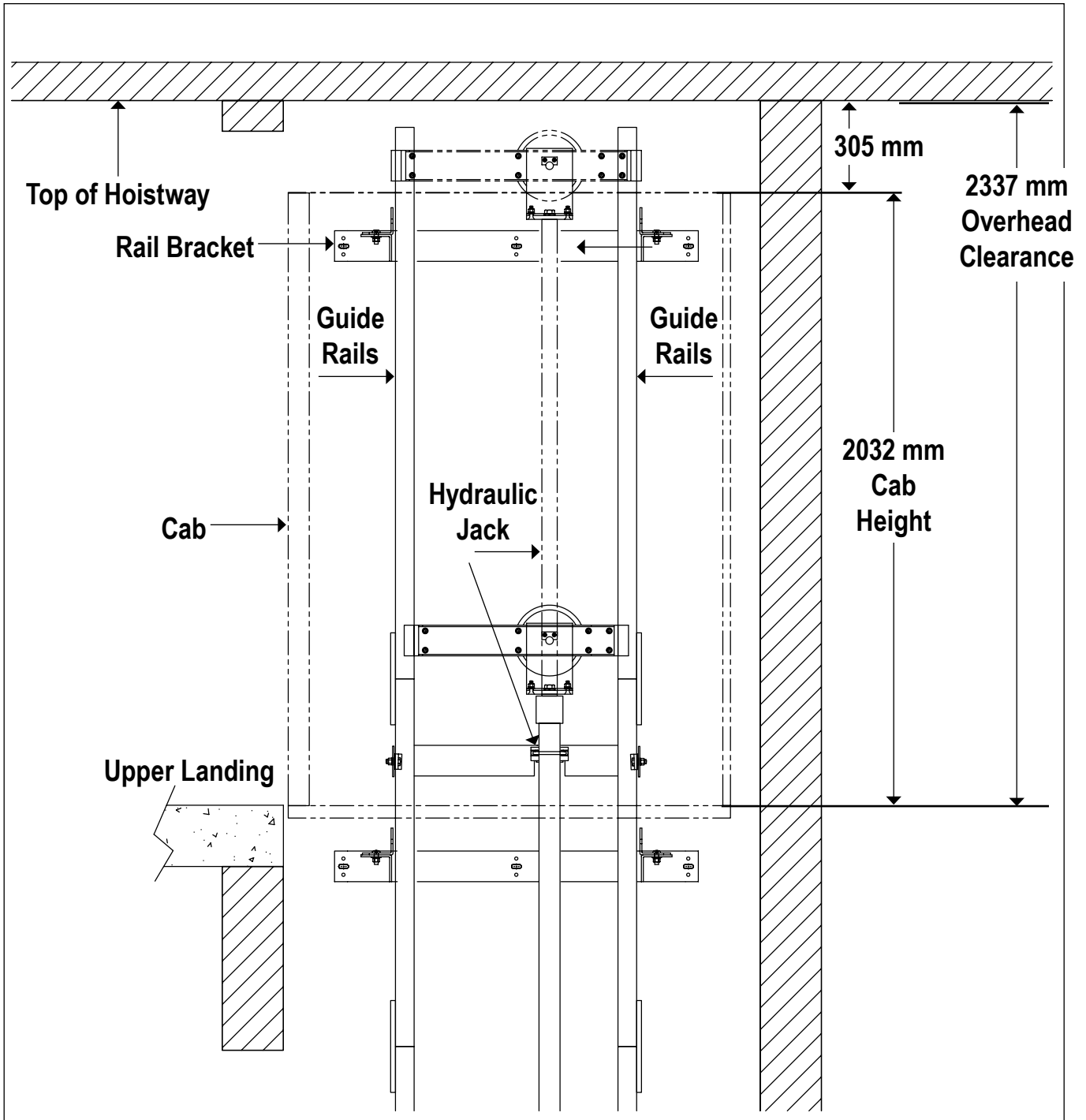
# Wood Construction - Plan View



# Pit Details



# Overhead Clearance Details

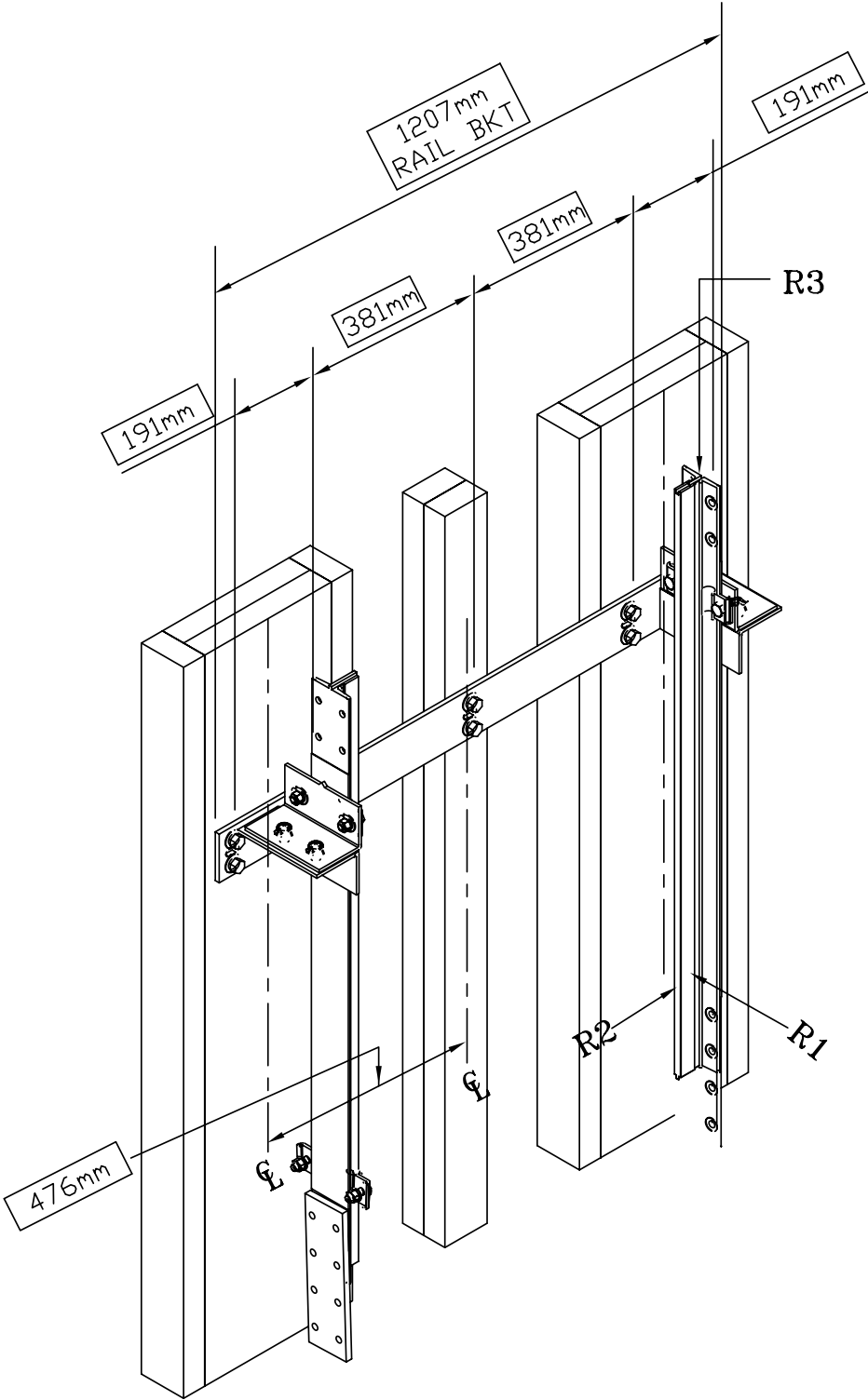


## NOTE

The above dimensions are for a 2032 mm high cab, the minimum overhead clearance for a  
mm high cab is 2743 mm.

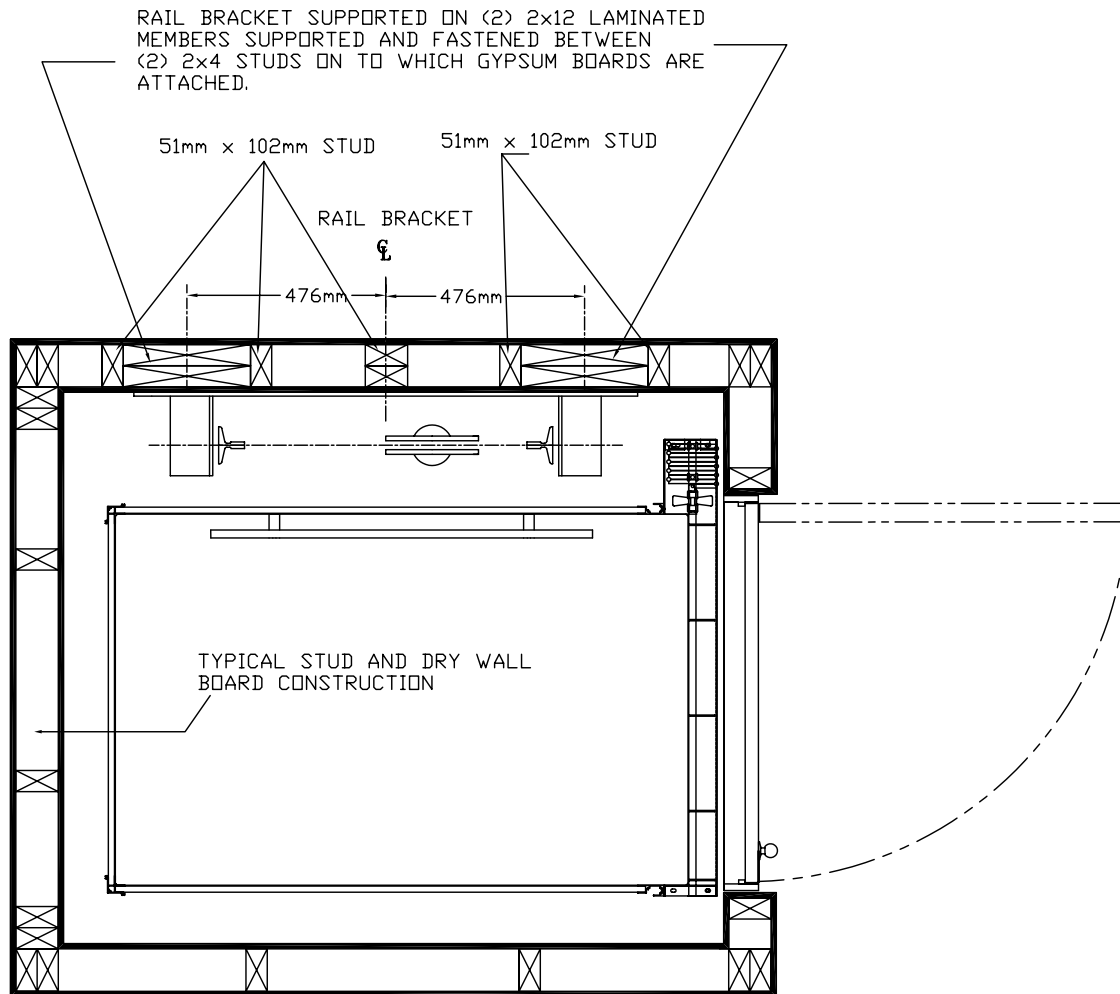
2438

# Suggested Wall Configuration for Wood Construction



REACTION	RAIL FORCES
R1	1.35 kN
R2	.86 kN
R3	28.47 kN
RAIL WEIGHT 11.9 kg /m	

## Suggested Wall Configuration for Wood Construction



NOTE:

1. THIS DRAWING IS FOR REFERENCE ONLY. BUILDING STRUCTURAL ENGINEER TO ENSURE THAT THE BUILDING AND HOISWAY WILL SAFELY SUPPORT ALL LOADS IMPOSED BY THE LIFT EQUIPMENT
2. FIRE RATING OF HOISWAY IS SUBJECT TO LOCAL BUILDING CODES.

### IMPORTANT

**These drawings are for reference purposes only. The building structural engineer must ensure that the building and hoisway will support all loads imposed by the lift equipment. Fire rating of hoisway is subject to local building codes.**

# Rail Support Wall Specifications

## Drawing Notes

- 1) See Lift Drawing for rail bracket spacing and pit depth.
- 2) Wall lateral support spacing:
  - ┆ for 51 mm x 102 mm studs, use 2090 mm max.
  - ┆ for 51 mm x 153 mm studs, use 4120 mm max.
- 3) Sheathing installation: install sheets vertically full width of shaft or min. centred on rail brackets.
- 4) Connectors to resist horizontal load but allow vertical movement.  
For Wood, use 51 mm x 6 mm cap screw lag bolts.

## General Specifications

- G1 The design and construction of all work is to conform to the local applicable building code.
- G2 Read these drawings in conjunction with all related architectural, mechanical, electrical, and lift drawings as well as any other contract documents.
- G3 The wall drawings have been prepared using engineering principles and the design loads that are applied by the lift rails to the wall. However, the details and member sizes and the attachments to the structure should not be construed as a complete design of the wall system. The contractor and/or the project engineer is responsible to evaluate the other loads that are applied to the wall from the floor or roof system and modify member sizes or connections as required by their analysis.
- G4 Do not scale the drawings.
- G5 See lift shop drawings for service loads (including dynamic effects) which are:
  - ┆ horizontal load parallel to the wall = 0.86 kN
  - ┆ horizontal load perpendicular to the wall = 1.35 kN
- G6 Wood:               SPF NO 1/2 Mix  
Concrete: 20 Mpa @ 28 days. If exposed use 5% to 7% air content.  
Anchor Bolts:       ASTM A307  
Mortar:               Type "S"  
Masonry Grout:     14 Mpa High Slump  
Masonry Block:     14 Mpa on net area
- G7 Wall to be installed plumb and square within 3 mm of top and bottom of shaft.
- G8 Wall lateral support spacing (H) selected for maximum horizontal deflection of H/360 from rail loads.

## Wood Construction

- W1 Separate wood from concrete with waterproof barrier or use pressure treated wood.
- W2 Bridging Maximum Spacing: Load Bearing or Shear walls – 1219 mm c/c
- W3 Nail or screw sheathing at 152 mm c/c at edges and 305 mm c/c to other members.  
Use 2.5" Standard Ardox nails or 51 mm #12 Screws.

## Masonry Construction

- M1 All masonry construction to conform to applicable local standards
- M2 Reinforce lintel blocks with 2 m-15 m bottom bars unless noted.
- M3 Provide continuous ladder type joint reinforcement at 400 mm c/c.

# Infinity Standard Notes

## HOISTWAY

- o The hoistway must be designed and built in accordance with “safety code for elevators and escalators” (ASME A17.1 - 2000 Part 5, Section 5.3) and all state and local codes.
- o Due to close running clearances, owner/agent must ensure that hoistway and pit (where provided) are level, plumb and square and are in accordance with the dimensions on these drawings.

## MINIMUM OVERHEAD CLEARANCE

- m Owner/agent must ensure minimum overhead clearance is in compliance with codes.

## CONSTRUCTION SITE

- o Owner/agent to provide all masonry, carpentry and drywall work as required and shall patch and make good (including finish painting) all areas where walls/floors may require to be cut, drilled or altered in any way to permit the proper installation of the lift.

## DIMENSIONS

- o Contractor/customer to verify all dimensions and report any discrepancies to our office immediately.

## STRUCTURAL

- o Structural engineer to assure that building and shaft will safely support all loads imposed by the lift equipment. Refer to the tables on installation drawings for loads imposed by the equipment.
- o Suitable lintels must be provided by owner/agent. Door frames are not designed to support overhead wall loads.

## ELECTRICAL

- o Power supply with a lockable fused disconnect and auxiliary contact to brake the battery feed, or circuit breakers with a 3-pole breaker for battery feed required in compliance with electrical code (contact your Savaria dealer or refer to the table below for OEM part numbers).

Disconnect Switch Types & Accessories	Cutler Hammer	Federal Pioneer	Siemens
<b>1 PHASE 3 H.P. Pump Unit</b>			
<b>2 Pole Solid Neutral 208 or 230V 1 PH</b>	1HD221N	1322SN	ID321
<b>Required Auxiliary Contact</b>	DS16CP	E1K-1AEV-W94	MSSAK 116
<b>Required Type “D” Fuse (Buss type “FRN” or equal)</b>	2@20 amp	2@20 amp	2@20 amp
<b>3 PHASE 3 H.P. Pump Unit</b>			
<b>3 Pole Solid Neutral 208V 3 PH</b>	1HD321N	1332SN	ID321
<b>Required Auxiliary Contact</b>	DS16CP	E1K-1AEV-W94	MSSAK 116
<b>Required Type “D” Fuse (Buss type “FRN” or equal)</b>	3@15 amp	3@15 amp	3@15 amp
<b>Cab Lighting</b>			
<b>1 Pole Solid Neutral 120V 1 PH</b>	GP 111N	86211	CFN 211
<b>Required Type “D” Fuse (Buss type “T” or equal)</b>	1@15 amp	1@15 amp	1@15 amp

- o Permanent power of North American: 230 Volt, single-phase, 30 amp or 208 Volt, three-phase, 30 amp / International: 220 volt, single-phase 50 Hz, 30 amps must be supplied by others before installation.
- o Remote hall call (when supplied) to be installed by the owner/agent at 1067 mm from landing floor and 203 mm from the door frame edge.

## ENTRANCES

- o Entrance assemblies must be adjusted to align with platform and interlock equipment. Others to allow an adequate rough opening.
- o Entrance assembly must be securely fastened to walls by elevator contractor.



# Specifications for Part 5.3 Compliance

## PART 1 - GENERAL

### SCOPE

To furnish all labor, materials and equipment necessary or required to fully complete the installation of the commercial wheelchair platform lift as indicated on the Drawings and Specifications. This suggested specification is intended to cover the complete installation of the Infinity Residential Elevator design.

### SYSTEM DESCRIPTION

The lift assembly shall consist of a power unit, car, guide system, 1:2 cable hydraulic lifting device, control system, signals and alarms, electrical wiring, and parts and accessories necessary to provide required performance, operation, code and safety requirements.

#### 1.3.1 QUALITY ASSURANCE

The lift shall meet or exceed the applicable regulations of all governing agencies and be in conformance with the applicable sections of the most current edition of the following codes and standards:

- a) ASME A17.1 "Safety Code for Elevators and Escalators; "Private Residence Elevators". CAN/CSA B44 Part 5 Section 5.3
- b) ICC/ANSI A117.1-1998 "Accessible and Usable Buildings and Facilities".
- c) NFPA 70-1999 "The National Electric Code" (NEC).
- d) ADAAG "Americans With Disabilities Act Accessibility Guidelines" (where applicable).
- e) CSA B44.1/ASME A17.5 "Elevator and Escalator Electrical Equipment"
- f) Local codes and regulations, as applicable.

#### 1.3.2 REQUIREMENTS OF THE REGULATORY AGENCIES

- a) Fabricate and install work in compliance with all applicable jurisdictional authorities.
- b) File shop drawings and submissions to local authorities as the information is made available. Company pre-inspection and jurisdictional authority inspections and permits are to be made on a timely basis as required. Work will include all inspections and re-inspections that are required to ensure licenses are issued.

#### 1.3.3 SUBCONTRACTOR QUALIFICATIONS

- a) Execute work of this specification only by a contractor/company who has adequate product and public liability insurance in excess of one million dollars.
- b) Skilled tradesmen must be employees of the contractor and perform the work on a timely basis. Employees must be trained by the manufacturer and be supervised by the lift contractor.

#### 1.3.4 SUBSTITUTIONS

No substitutions will be considered unless written request for approval has been submitted by the bidder and received by the architect at least 10 days before the receipt of bids. Each such request shall include a complete description of the proposed substitute including drawings, test data, photographs, and any other information needed for consideration.

## PART 2- PREPARATORY WORK BY OTHERS

### 2.1

The following preparatory work to accommodate/receive the lift is to be done by others.

#### 2.1.1

Provide power unit machine room to meet applicable Codes and Standards.

#### 2.1.2

Permanent power (North American: 230 Volt, Single Phase, 30 Amp or 208 Volt, 3 Phase, 30 Amp / International: / International: 220 volt, single phase 50 Hz, 30 amps) to operate the lift to be provided to a Lockable Fused/Cartridge Type Disconnect Switch with auxiliary contact/switch for emergency battery lowering. Refer to architectural drawings for permanent power specifications and location of disconnects.

#### 2.1.3

Provide North American: 115 volt / International: 220 volt lighting supply and disconnect. Refer to architectural drawings for permanent power specifications and location of disconnects.

#### 2.1.4

Provide an enclosed, plumb and square hoistway with smooth interior surfaces. Include for fascias or furring of hoistway interior where applicable.

#### 2.1.5

Provide fire doors, frames, and door hardware.

Provide rough openings as per lift contractor's drawings.

#### 2.1.6

Provide substantial, level pit floor slab to support loads indicated on lift contractor's shop drawings.

#### 2.1.7

Provide adequate support for guide rail fastenings.

#### 2.1.8

Provide pit water proofing to maintain a dry pit. Sump pump where required by authority having jurisdiction. (see lift contractor for location).

#### 2.1.9

Provide 203 mm minimum pit.

#### 2.1.10

Provide 2337 mm or 2743 mm minimum overhead (distance from floor at upper level to underside of roof).

## PART 3 – SUBMITTALS

### 3.1 SHOP DRAWINGS (presentation)

The shop drawings shall show a complete layout of the lift equipment detailing dimensions, clearances and location of machinery. Including the following:

- a) Drawings show the dimensions including plans, elevations, and sections to show equipment locations.
- b) Load and reaction drawings shall be provided by the lift manufacturer and detailed on drawings.

## PART 4 – PRODUCT DATA

### 4.1 MANUFACTURER / PRODUCT

The lift shall be the SAVARIA Infinity Residential Elevator manufactured by Savaria.

Toll Free (800) 661-5112

Phone (905) 791-5555

Fax (905) 791-2222

Dealer Name \_\_\_\_\_

Number \_\_\_\_\_

Rated Load: (specify) 340 kg or 454 kg

Nominal Speed: 0.18 mps

Car Dimensions: (specify) 914 mm W X 1219 mm D x 2032 mm H or

914 mm W X 1372 mm D x 2032 mm H or

914 mm W x 1524 mm D x 2032 mm H

Operation: Automatic

Power Supply:(specify) North American: 230 Volt, 1 Phase, 30 Amps

or 208 Volt, 3 Phase, 30 Amps / International: / International: 220

volt, single phase 50 Hz, 30 amps

Travel Distance: (specify) 15.24 m max \_\_\_\_\_

Levels Served: (specify) up to 5 \_\_\_\_\_

Number of Cab Openings: Two (2) Maximum

Lighting Supply: North American: 115 Volt, 1 Phase, 60 Cycle, 15

Amps / International: 220 Volt, 50 Hz, 15 Amps

Jack Type: 1:2 Cable Hydraulic

Pump Type: Submersible with Variable Speed Valve

Leveling Device Type: Magnetic Floor Scanner

### 4.2 CAR ENCLOSURE

#### 4.2.1 WALLS

13 mm Melamine or MDF panels and anodized aluminum cab entrance trim.

#### 4.2.2 CEILINGS

White with four (4) recessed incandescent down lights.

#### 4.2.3 FLOOR

Plywood sub-flooring.

#### 4.2.4 HANDRAIL

Aluminum handrail located on control panel side of cab.

#### 4.2.5 EMERGENCY OPERATION

The lift car shall be equipped with a battery-powered emergency lowering device and alarm that can be actuated on the failure of normal building power supply. Battery will be rechargeable type with an automatic recharging system.

#### 4.2.6 EMERGENCY LIGHT

The car shall be equipped with an integral emergency light that will illuminate automatically in the event of a main power failure.

#### 4.2.7 CAR OPERATING PANEL

Car operating panel shall consist of metal push buttons with halo lighting for each landing, an emergency stop button, an alarm button and a key switch. The key is removable in both the on and off position. All mounted on an anodized aluminum panel.

#### 4.2.8 DIGITAL FLOOR INDICATOR

Optional Digital Floor Indicator located in the control panel will display the location and direction of travel (floor number) of the lift in the shaft.

#### 4.2.9 CAR LIGHTING

The car lighting shall consist of four (4) low voltage recessed incandescent down lights. The failure of one lamp shall not cause the remaining lamp to extinguish.

### 4.2.10 AUTOMATIC LIGHTS

Overhead lights in the car compartment shall turn ON automatically when the lift door is opened and will stay on while the lift is in use. The lift lights will shut off by a timer when the lift is not in use.

### 4.3 PLATFORM TOE GUARD

A platform toe guard shall be provided at each car entrance opening to extend below the car entrance opening for safety.

### 4.4 DOOR LOCKS

Locks shall be electrically operated and electrically released at floor level and will remain unlocked until hall or car call is placed. When released, the locks' lag member will drop down and close the electrical circuitry to ensure the elevator cannot move unless the door is closed and locked (a true interlock).

### 4.5 HALL CALL STATIONS

Provide a keyless hall call station with an illuminated call button and stainless steel cover plate for each landing.

### 4.6 LEVELING DEVICE

- a) The lift shall be provided with a 2-way leveling device, which will maintain the car within 13 mm of the landing.
- b) Levelling device sensors shall be located in a position to be inaccessible to unauthorized persons.

### 4.7 CAR GATE REQUIRED OPTION

Horizontally collapsible accordion style panel fold car gate with three (3) clear acrylic vision panels shall enclose each car entrance.

### 4.8 HYDRAULIC POWER UNIT

- a) The pump and motor shall be the submersible type installed inside the oil tank.
- b) The controller shall be integrally mounted on the power unit frame and pre-wired and tested before shipment.
- c) Control circuitry to be located at the top of the oil tank.
- d) The power unit control valve shall be a variable speed proportional valve type that includes all hydraulic control valving inherently.

This valve shall incorporate the following features:

- (i) Up and down acceleration and deceleration speed adjustment for smooth starts and stops.
- (ii) Smooth stops at each landing shall be an inherent feature of the valve.
- (iii) Adjustable pressure relief valve.
- (iv) Manually operating 'DOWN' valve to lower lift in an emergency.
- (v) Pressure gauge indicating in P.S.I. and Bars.
- (vi) Gate valve to isolate cylinder from pump unit.
- (vii) Negative pressure switch.

### 4.9 CYLINDER AND PLUNGER

#### 4.9.1

The cylinder shall be constructed of steel pipe of a sufficient thickness and suitable safety margin. The top of the cylinder shall be equipped with a cylinder head with an internal guide ring and self-adjusting packing.

#### 4.9.2

The plunger shall be constructed of a steel shaft of a proper diameter machined true and smooth. The plunger shall be provided with a stop electrically welded to the bottom to prevent the plunger from leaving the cylinder.

### 4.10 CABLE

Minimum of two 10 mm IWRC Galvanized Aircraft Cables.  
Minimum breaking strength of 6532 kgs. each.

#### 4.11 SAFETY DEVICE

A "slack/broken cable" safety device shall be supplied which will stop and sustain the lift and its rated load, if either of the hoisting cables become slack or breaks. The safety device shall be resettable by the operation of the lift in the upward direction. A switch shall be mounted in such a position as to sense the operation of the safety device, and will open the safety circuit to the controller to prevent operation of the lift in either direction.

#### 4.12 GUIDE YOKE

The 1:2 guide yoke/sheave arrangement shall be supplied with a sheave, guide shoes, roller bearings and adjustable cable guards. The sheave shall be finished with rounded grooves to fit the cables.

#### 4.13 FINAL LIMIT SWITCH

The lift shall be equipped with a final limit switch to cut off all power to the lift if the upper normal terminal stopping devices fail.

#### 4.14 GUIDE RAILS AND BRACKETS

- a) Steel 8lb/ft "T" guide rails and brackets shall be securely fastened to the building structure.
- b) Brackets shall securely hold the guides in a plumb and true position regardless of car loading.
- c) Guides shall be bolted through the hoistway enclosure with back-up plates, washers and nuts. Subject to architects' alterations and approval.

#### 4.15 CAR SLING

- a) Car sling shall be fabricated from steel members with adequate bracing to support the platform and cab.
- b) The buffer-striking member on the underside of the car must stop the lift before the jack plunger reaches its down limit of travel.
- c) Guide shoes to be solid slipper type with polyurethane inserts.

#### 4.16 WIRING

All wiring and electrical connections shall comply with applicable codes, insulated wiring shall have flame retardant and moisture proof outer covering and shall be run in conduit or electrical wireways. Traveling cables shall be flexible and suitably suspended to relieve strain.

### **Part 5 - EXECUTION**

#### 5.1 EXAMINATION

All site dimensions shall be taken to ensure that tolerances and clearances have been maintained and meet local regulations.

#### 5.2 PREPARATION

Pre-inspect the construction and service requirements for "Work by Others". These requirements will be included in drawings, diagrams, engineering data sheets and special instructions before the work commences.



**107 Alfred Kuehne Blvd.  
Brampton, ON Canada L6T 4K3  
Phone: 905-791-5555  
Fax: 905-791-2222  
Sales: 800-661-5112  
[www.savaria.com](http://www.savaria.com)**